

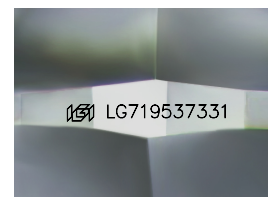
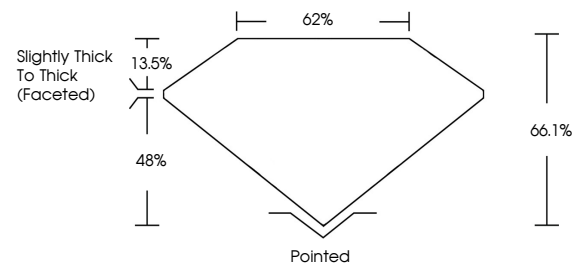


ELECTRONIC COPY

LABORATORY GROWN DIAMOND REPORT

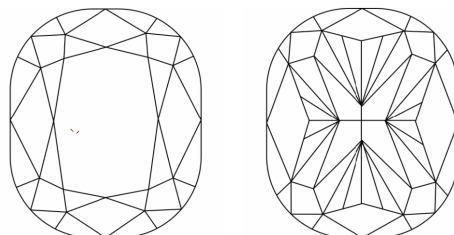
LG719537331
Report verification at igi.org

PROPORTIONS



Sample Image Used

CLARITY CHARACTERISTICS



KEY TO SYMBOLS

Red symbols indicate internal characteristics.
Green symbols indicate external characteristics.

COLOR

D E F G H I J Faint Very Light Light

CLARITY

IF WS¹⁻² VS¹⁻² SI¹⁻² |¹⁻³

| | | | | |
|------------------------|--------------------------------|---------------------------|----------------------|----------|
| Internally Flawless | Very Very Slightly Included | Very Slightly Included | Slightly Included | Included |
|------------------------|--------------------------------|---------------------------|----------------------|----------|

LABORATORY GROWN DIAMOND REPORT



July 4, 2025

IGI Report Number **LG719537331**

| | |
|-------------|--------------------------|
| Description | LABORATORY GROWN DIAMOND |
|-------------|--------------------------|

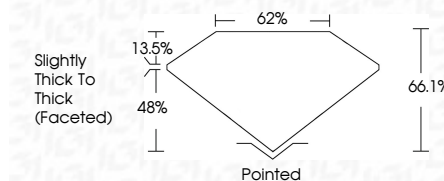
Shape and Cutting Style **CUSHION MODIFIED
BRILLIANT**

Measurements 7.12 X 5.05 X 3.34 MM

GRADING RESULTS

Carat Weight 1.03 CARAT

Color Grade F

Clarity Grade VVS 2

ADDITIONAL GRADING INFORMATION

Polish **EXCELLENT**Symmetry **EXCELLENT**Fluorescence **NONE**Inscription(s) LG719537331

Comments: This Laboratory Grown Diamond was created by Chemical Vapor Deposition (CVD) growth process.
Type IIa



© IGI 2020, International Gemological Institute

FD - 10 20



THIS DOCUMENT WAS PRODUCED WITH THE FOLLOWING SECURITY MEASURES: SPECIAL DOCUMENT PAPER, INK SCREENS, WATERMARK, BACKGROUND DESIGNS, HOLOGRAM AND OTHER SECURITY FEATURES NOT LISTED AND DO EXCEED DOCUMENT SECURITY INDUSTRY GUIDELINES

www.igi.org

| | |
|----------------------------|--------------------------------------|
| July 4, 2025 | |
| GI Report No. L6719527331 | |
| CUSHION MODIFIED BRILLIANT | |
| MM | |
| 12 X 12 X 6.05 X 3.34 MM | |
| Carat Weight | 1.03 CARAT |
| Color Grade | F |
| Clarity Grade | VVS 2 |
| Depth | 66.1% |
| Gable | 62% |
| Girdle | Slightly Thick to Thick (Faceted) |
| Culet | Poished |
| Polish | EXCELLENT |
| Symmetry | EXCELLENT |
| Fluorescence | NONE |
| Inscriptions(s) | A681 LG719527331 |

Comments:

The Laboratory Grown Diamond was
examined by the American Gem Society
(AGS) growth process.
Type IIG.