

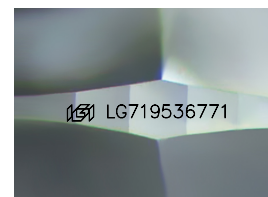
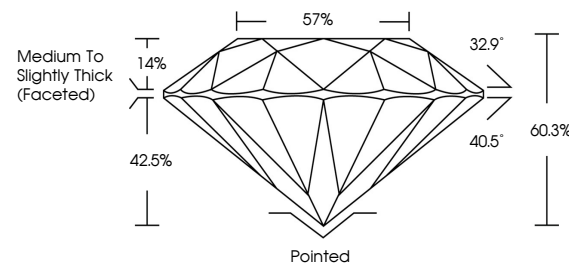


ELECTRONIC COPY

LABORATORY GROWN DIAMOND REPORT

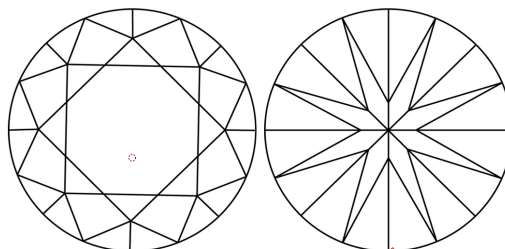
LG719536771
Report verification at igi.org

PROPORTIONS



Sample Image Used

CLARITY CHARACTERISTICS



KEY TO SYMBOLS

Red symbols indicate internal characteristics.
Green symbols indicate external characteristics.

COLOR

D E F G H I J Faint Very Light Light

CLARITY

IF WS¹⁻² VS¹⁻² S¹⁻² |¹⁻³

Internally Flawless	Very Very Slightly Included	Very Slightly Included	Slightly Included	Included
------------------------	--------------------------------	---------------------------	----------------------	----------



July 5, 2025

IGI Report Number **LG719536771**

Description	LABORATORY GROWN DIAMOND
-------------	--------------------------

Shape and Cutting Style **ROUND BRILLIANT**

Measurements 8.13 - 8.18 X 4.92 MM

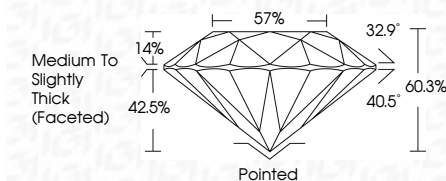
GRADING RESULTS

Carat Weight **2.00 CARATS**

Color Grade

Clarity Grade WS 2

Cut Grade **IDEAL**



ADDITIONAL GRADING INFORMATION

Polish **EXCELLENT**Symmetry **EXCELLENT**Fluorescence **NONE**Inscription(s) LG719536771

Comments: As Grown - No indication of post-growth treatment.

This Laboratory Grown Diamond was created by High Pressure High Temperature (HPHT) growth process.

Type II



© IGI 2020, International Gemological Institute

FD - 10 20

www.igi.org



THIS DOCUMENT WAS PRODUCED WITH THE FOLLOWING SECURITY MEASURES: SPECIAL DOCUMENT PAPER, INK SCREENS, WATERMARK, BACKGROUND DESIGNS, HOLOGRAM AND OTHER SECURITY FEATURES NOT LISTED AND DO EXCEED DOCUMENT SECURITY INDUSTRY GUIDELINES

JULY 5, 2025 GJ Report No. LG719536771 ROUND BRILLIANT	2.00 CARATS D VS2 IDEAL 60.3% 57% Medium to Slightly Thick (Faceted)	Polished EXCELLENT EXCELLENT NONE #69 LG719536771	Comments: as Grown - No indication of post-growth treatment. This Laboratory Growth Diamond was created by High Pressure High Temperature (HPHT) growth process. Type II
--	--	---	--