

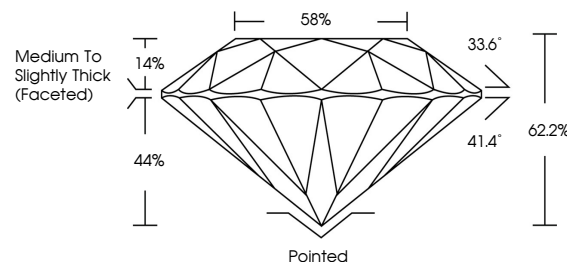


**ELECTRONIC COPY**

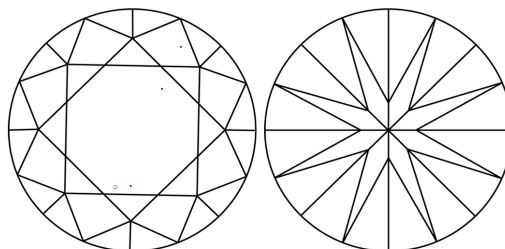
## LABORATORY GROWN DIAMOND REPORT

LG719536204  
Report verification at [lgi.org](https://lgi.org)

## PROPORTIONS



## CLARITY CHARACTERISTICS



### KEY TO SYMBOLS

Red symbols indicate internal characteristics.  
Green symbols indicate external characteristics.

## COLOR

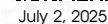
D E F G H I J Faint Very Light Light

## CLARITY

IF WS<sup>1-2</sup> VS<sup>1-2</sup> SI<sup>1-2</sup> |<sup>1-3</sup>

Internally Flawless	Very Very Slightly Included	Very Slightly Included	Slightly Included	Included
------------------------	--------------------------------	---------------------------	----------------------	----------

## LABORATORY GROWN DIAMOND REPORT

IGI Report Number **LG719536204**Description **LABORATORY GROWN DIAMOND**Shape and Cutting Style **ROUND BRILLIANT**

Measurements 8.16 - 8.19 X 5.09 MM

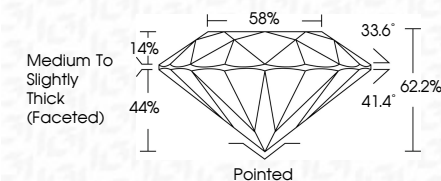
## GRADING RESULTS

Carat Weight **2.09 CARATS**

Color Grade D

Clarity Grade VS 1

Cut Grade **IDEAL**



### ADDITIONAL GRADING INFORMATION

Polish **EXCELLENT**Symmetry **EXCELLENT**Fluorescence **NONE**Inscription(s)  LG719536204

Comments: This Laboratory Grown Diamond was created by Chemical Vapor Deposition (CVD) growth process.  
Type IIa



© IGI 2020, International Gemological Institute

FD - 10 20

**www.igi.org**

THIS DOCUMENT WAS PRODUCED WITH THE FOLLOWING SECURITY MEASURES: SPECIAL DOCUMENT PAPER, INK SCREENS, WATERMARK BACKGROUND DESIGNS, HOLOGRAM AND OTHER SECURITY FEATURES NOT LISTED AND DO EXCEED DOCUMENT SECURITY INDUSTRY GUIDELINES

<p> <b>JULY 2, 2025</b>  <b>GI Report No 1G71953204</b>  <b>ROUND BRILLIANT</b> </p>	<p> <b>2.09 CARATS</b>  <b>D</b> </p>	<p> <b>VS 1</b>  <b>IDEAL</b>  <b>62.2%</b>  <b>85%</b> </p>	<p> <b>Medium to Slightly Thick Faceted</b> </p>	<p> <b>Polished</b>  <b>EXCELLENT</b>  <b>EXCELLENT</b>  <b>NONE</b>  <b>169 LG71953204</b> </p>	<p> <b>Comments:</b>  <b>This Laboratory Grown Diamond was created by Chemical Vapor Deposition (CVD) growth process.</b>  <b>Type IIa</b> </p>
--	---	--	--	--	---