



ELECTRONIC COPY

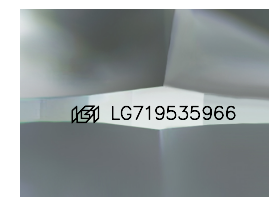
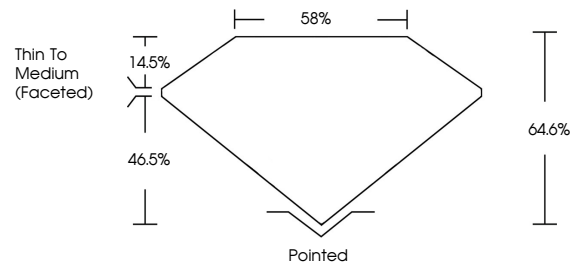
LG719535966
Report verification at igi.org



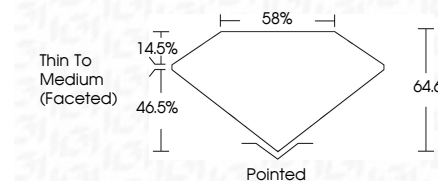
June 26, 2025
IGI Report Number **LG719535966**
Description **LABORATORY GROWN DIAMOND**
Shape and Cutting Style **CUSHION MODIFIED BRILLIANT**
Measurements **11.55 X 9.05 X 5.85 MM**
GRADING RESULTS
Carat Weight **4.72 CARATS**
Color Grade **E**
Clarity Grade **VS 1**

June 26, 2025
IGI Report Number **LG719535966**
Description **LABORATORY GROWN DIAMOND**
Shape and Cutting Style **CUSHION MODIFIED BRILLIANT**
Measurements **11.55 X 9.05 X 5.85 MM**
GRADING RESULTS
Carat Weight **4.72 CARATS**
Color Grade **E**
Clarity Grade **VS 1**

PROPORTIONS



Sample Image Used



ADDITIONAL GRADING INFORMATION

Polish **EXCELLENT**
Symmetry **EXCELLENT**
Fluorescence **NONE**
Inscription(s) **IGI LG719535966**

Comments: This Laboratory Grown Diamond was created by Chemical Vapor Deposition (CVD) growth process.
Type IIa

ADDITIONAL GRADING INFORMATION

Polish **EXCELLENT**
Symmetry **EXCELLENT**
Fluorescence **NONE**
Inscription(s) **IGI LG719535966**
Comments: This Laboratory Grown Diamond was created by Chemical Vapor Deposition (CVD) growth process.
Type IIa

COLOR

D E F G H I J Faint Very Light Light

CLARITY

IF	WS ¹⁻²	VS ¹⁻²	SI ¹⁻²	I ¹⁻³
Internally Flawless	Very Very Slightly Included	Very Slightly Included	Slightly Included	Included



IGI



June 26, 2025
IGI Report No **LG719535966**
CUSHION MODIFIED BRILLIANT
4.72 CARATS
E
Color Grade
Clarity Grade **VS 1**
Depth **64.6%**
Table **58%**
Girdle
Thin To Medium (Faceted)
Culet Pointed
Polish **EXCELLENT**
Symmetry **EXCELLENT**
Fluorescence **NONE**
Inscription(s) **IGI LG719535966**
Comments: This Laboratory Grown Diamond was created by Chemical Vapor Deposition (CVD) growth process.
Type IIa