



**INTERNATIONAL
GEMOLOGICAL
INSTITUTE**

ELECTRONIC COPY

LG719535540
Report verification at igi.org

LABORATORY GROWN DIAMOND REPORT



July 1, 2025

IGI Report Number **LG719535540**

Description	LABORATORY GROWN DIAMOND
-------------	--------------------------

Shape and Cutting Style **PRINCESS CUT**

Measurements **6.39 X 6.24 X 4.47 MM**

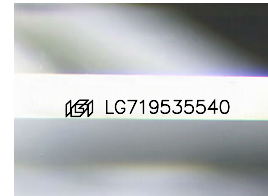
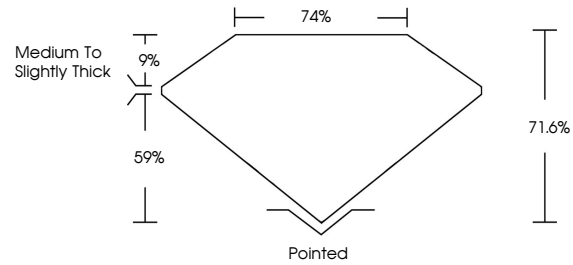
GRADING RESULTS

Carat Weight **1.53 CARAT**

Color Grade	G
-------------	---

Clarity Grade **VVS 2**

PROPORTIONS



Sample Image Used

COLOR

D E F G H I J Faint Very Light Light

CLARITY

IF WS¹⁻² VS¹⁻² SI¹⁻² I¹⁻³

Internally Flawless	Very Slightly Included	Very Slightly Included	Slightly Included	Included
---------------------	------------------------	------------------------	-------------------	----------



© IGI 2020, International Gemological Institute

FD - 10 20



THIS DOCUMENT WAS PRODUCED WITH THE FOLLOWING SECURITY MEASURES: SPECIAL DOCUMENT PAPER, INK SCREENS, WATERMARK, BACKGROUND DESIGNS, HOLOGRAM AND OTHER SECURITY FEATURES NOT LISTED AND DO EXCEED DOCUMENT SECURITY INDUSTRY GUIDELINES



IGI

July 1, 2005	IGI Report No I6719835540	6.39 X 6.24 X 4.47 MM	1.53 CARAT	
PRINCESS CUT	Color Weight		G	
	Color Grade		VVS 2	
	Clarity Grade		71.6%	
	Depth		74%	
	Table		Medium to Slightly	
	Girdle		Thick	
	Quart		Pointed	
	Polish		VERY GOOD	
	Symmetry		VERY GOOD	
	Fluorescence		NONE	
	Inscription(s)			I6719835540

Comments:
This Laboratory Grown Diamond was created by Chemical Vapor Deposition (CVD) growth process.
Type IIa