




**ELECTRONIC COPY**

## LABORATORY GROWN DIAMOND REPORT

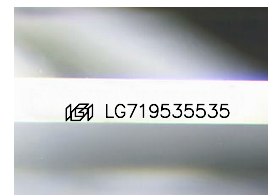
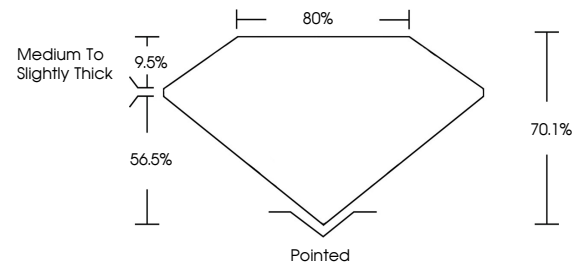
LG719535535  
Report verification at [igi.org](https://igi.org)

June 27, 2025	
IGI Report Number	LG719535535
Description	LABORATORY GROWN DIAMOND
Shape and Cutting Style	PRINCESS CUT
Measurements	6.43 X 6.35 X 4.45 MM
GRADING RESULTS	
Carat Weight	1.59 CARAT
Color Grade	D
Clarity Grade	VS 1

### ADDITIONAL GRADING INFORMATION

Polish	VERY GOOD
Symmetry	VERY GOOD
Fluorescence	NONE
Inscription(s)	 LG719535535
Comments: This Laboratory Grown Diamond was created by Chemical Vapor Deposition (CVD) growth process.	
Type IIa	

## PROPORTIONS



Sample Image Used

## COLOR

D E F G H I J Faint Very Light Light

## CLARITY

IF	VS <sup>1-2</sup>	VS <sup>1-2</sup>	SI <sup>1-2</sup>	I <sup>1-3</sup>
Internally Flawless	Very Very Slightly Included	Very Slightly Included	Slightly Included	Included

## LABORATORY GROWN DIAMOND REPORT



June 27, 2025	
IGI Report Number	LG719535535
Description	LABORATORY GROWN DIAMOND
Shape and Cutting Style	PRINCESS CUT
Measurements	6.43 X 6.35 X 4.45 MM
GRADING RESULTS	
Carat Weight	1.59 CARAT
Color Grade	D
Clarity Grade	VS 1

### ADDITIONAL GRADING INFORMATION

Polish	VERY GOOD
Symmetry	VERY GOOD
Fluorescence	NONE
Inscription(s)	 LG719535535
Comments: This Laboratory Grown Diamond was created by Chemical Vapor Deposition (CVD) growth process.	
Type IIa	



© IGI 2020, International Gemological Institute

FD - 10 20



THIS DOCUMENT WAS PRODUCED WITH THE FOLLOWING SECURITY MEASURES: SPECIAL DOCUMENT PAPER, INK SCREENS, WATERMARK, BACKGROUND DESIGNS, HOLOGRAM AND OTHER SECURITY FEATURES NOT LISTED AND DO EXCEED DOCUMENT SECURITY INDUSTRY GUIDELINES

**www.igi.org**

June 27, 2025  
 IGI Report No LG719535535  
 PRINCESS CUT

4.43 X 6.35 X 4.45 MM	Color Weight Color Grade	1.59 CARAT D
Clarity Grade	VS 1	
Depth	70.1%	
Table	80%	
Girdle	Medium To Slightly Thick	
Polish	Polished	
Symmetry	VERY GOOD	
Fluorescence	VERY GOOD	
Comments(s)	NONE	Serial # 271059555

**Comments:**  
This Laboratory Grown Diamond was  
created by Chemical Vapor Deposition  
(CVD) growth process.