




ELECTRONIC COPY

LABORATORY GROWN DIAMOND REPORT

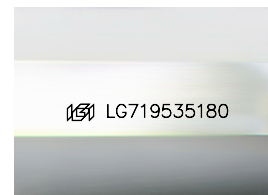
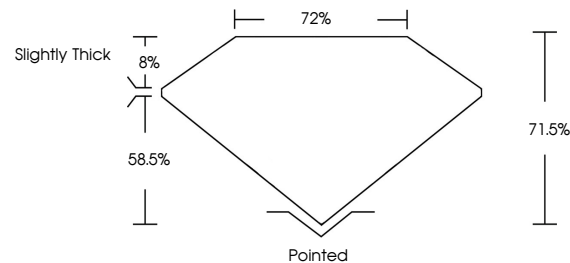
LG719535180
Report verification at igi.org

June 26, 2025	
IGI Report Number	LG719535180
Description	LABORATORY GROWN DIAMOND
Shape and Cutting Style	PRINCESS CUT
Measurements	7.79 X 7.78 X 5.56 MM
GRADING RESULTS	
Carat Weight	3.01 CARATS
Color Grade	E
Clarity Grade	VVS 2

ADDITIONAL GRADING INFORMATION

Polish	EXCELLENT
Symmetry	EXCELLENT
Fluorescence	NONE
Inscription(s)	 LG719535180
Comments: This Laboratory Grown Diamond was created by Chemical Vapor Deposition (CVD) growth process.	
Type IIa	

PROPORTIONS



Sample Image Used

COLOR

D E F G H I J Faint Very Light Light

CLARITY

IF	VS ¹⁻²	VS ¹⁻²	SI ¹⁻²	I ¹⁻³
Internally Flawless	Very Very Slightly Included	Very Slightly Included	Slightly Included	Included

LABORATORY GROWN DIAMOND REPORT



June 26, 2025	
IGI Report Number	LG719535180
Description	LABORATORY GROWN DIAMOND
Shape and Cutting Style	PRINCESS CUT
Measurements	7.79 X 7.78 X 5.56 MM
GRADING RESULTS	
Carat Weight	3.01 CARATS
Color Grade	E
Clarity Grade	VVS 2

ADDITIONAL GRADING INFORMATION

Polish	EXCELLENT
Symmetry	EXCELLENT
Fluorescence	NONE
Inscription(s)	 LG719535180
<p>Comments: This Laboratory Grown Diamond was created by Chemical Vapor Deposition (CVD) growth process.</p> <p>Type IIa</p>	



www.igi.org

© IGI 2020, International Gemological Institute

FD - 10 20



THIS DOCUMENT WAS PRODUCED WITH THE FOLLOWING SECURITY MEASURES: SPECIAL DOCUMENT PAPER, INK SCREENS, WATERMARK, BACKGROUND DESIGNS, HOLOGRAM AND OTHER SECURITY FEATURES NOT LISTED AND DO EXCEED DOCUMENT SECURITY INDUSTRY GUIDELINES

June 26, 2025
 IGI Report No LG719535180
 PRINCESS CLIT

7.75 X 7.75 X 5.56 MM	3.01 CARATS
Carat Weight	E
Color Grade	VS 2
Clarity Grade	71.6%
Depth	72%
Table	Slightly Thick
Girdle	
Culet	Pointed
Polish	EXCELLENT
Symmetry	EXCELLENT
Fluorescence	NONE
Comments	see description

Comments:
This Laboratory Grown Diamond was created by Chemical Vapor Deposition (CVD) growth process.