

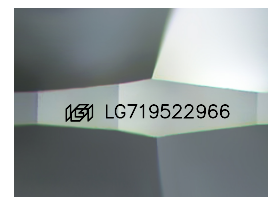
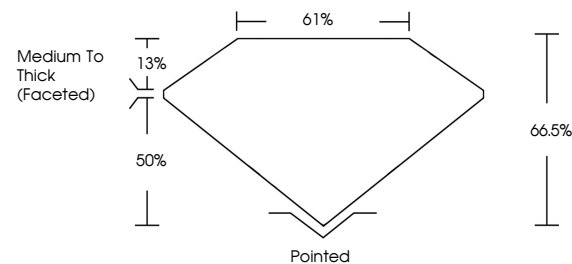


ELECTRONIC COPY

LABORATORY GROWN DIAMOND REPORT

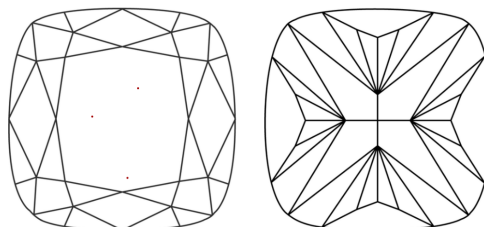
LG719522966
Report verification at igi.org

PROPORTIONS



Sample Image Used

CLARITY CHARACTERISTICS



KEY TO SYMBOLS

Red symbols indicate internal characteristics.
Green symbols indicate external characteristics.

COLOR

D E F G H I J Faint Very Light Light

CLARITY

IF	VS ¹⁻²	VS ¹⁻²	SI ¹⁻²	I ¹⁻³
Internally Flawless	Very Very Slightly Included	Very Slightly Included	Slightly Included	Included

LABORATORY GROWN DIAMOND REPORT



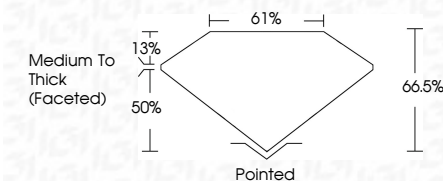
June 26, 2025

IGI Report Number **LG719522966**Description **LABORATORY GROWN DIAMOND**Shape and Cutting Style **SQUARE CUSHION MODIFIED
BRILLIANT**

Measurements **6.87 X 6.80 X 4.52 MM**

GRADING RESULTS

Carat Weight 1.59 CARAT

Color Grade **E**Clarity Grade **VVS 2**

ADDITIONAL GRADING INFORMATION

Polish **EXCELLENT**Symmetry **EXCELLENT**Fluorescence **NONE**Inscription(s) LG719522966

Comments: This Laboratory Grown Diamond was created by Chemical Vapor Deposition (CVD) growth process.
Type IIa



© IGI 2020, International Gemmological Institute

FD - 10 20

www.igi.org

THIS DOCUMENT WAS PRODUCED WITH THE FOLLOWING SECURITY MEASURES: SPECIAL DOCUMENT PAPER, INK SCREENS, WATERMARK BACKGROUND DESIGNS, HOLOGRAM AND OTHER SECURITY FEATURES NOT LISTED AND DO EXCEED DOCUMENT SECURITY INDUSTRY GUIDELINES

June 24, 2026	GI Report No. L671982946	SQUARE CUSHION MODIFIED BRILLIANT
1.87 X 0.80 X 0.52 MM	Carat Weight	1.55 CARAT
Color Grade	Clarity Grade	VVS 2
Depth	Table	64.5%
Girdle		0.1%
		Medium to Thick (Faceted)
Culet		Pointed
Polish		EXCELLENT
Symmetry		EXCELLENT
Fluorescence		NONE
Inscription(s)		689 LG71982946
Comments:		
This Laboratory Crown Diamond was not subjected to any heat treatment or CO ₂ growth process.		
Type Iia		