



ELECTRONIC COPY

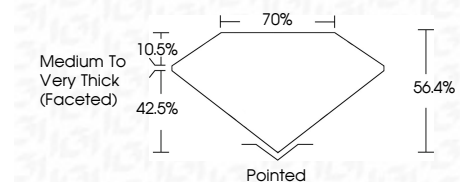
LG719516410
Report verification at igi.org



June 30, 2025
IGI Report Number **LG719516410**
Description **LABORATORY GROWN DIAMOND**
Shape and Cutting Style **MODIFIED SHIELD BRILLIANT**
Measurements **7.27 X 6.61 X 3.73 MM**

GRADING RESULTS

Carat Weight **1.11 CARAT**
Color Grade **F**
Clarity Grade **VS 2**



ADDITIONAL GRADING INFORMATION

Polish **VERY GOOD**
Symmetry **VERY GOOD**
Fluorescence **NONE**
Inscription(s) **IGI LG719516410**
Comments: This Laboratory Grown Diamond was created by Chemical Vapor Deposition (CVD) growth process. Type IIa



June 30, 2025
IGI Report No LG719516410
MODIFIED SHIELD BRILLIANT
7.27 X 6.61 X 3.73 MM
Carat Weight **1.11 CARAT**
Color Grade **F**
Clarity Grade **VS 2**
Depth **56.4%**
Table **10.5%**
Girdle **Medium to Very Thick (Faceted)**
Culet **Pointed**
Polish **VERY GOOD**
Symmetry **VERY GOOD**
Fluorescence **NONE**
Inscription(s) **IGI LG719516410**
Comments: This Laboratory Grown Diamond was created by Chemical Vapor Deposition (CVD) growth process. Type IIa

June 30, 2025
IGI Report Number **LG719516410**
Description **LABORATORY GROWN DIAMOND**
Shape and Cutting Style **MODIFIED SHIELD BRILLIANT**
Measurements **7.27 X 6.61 X 3.73 MM**

GRADING RESULTS

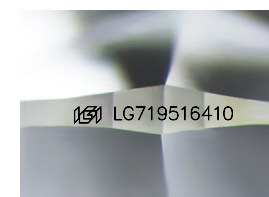
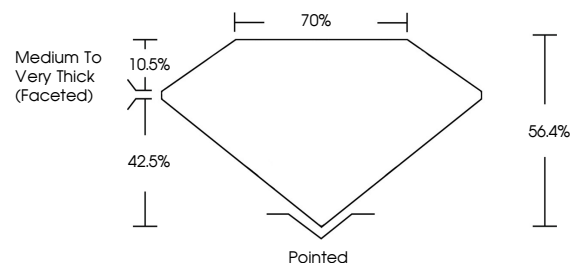
Carat Weight **1.11 CARAT**
Color Grade **F**
Clarity Grade **VS 2**

ADDITIONAL GRADING INFORMATION

Polish **VERY GOOD**
Symmetry **VERY GOOD**
Fluorescence **NONE**
Inscription(s) **IGI LG719516410**

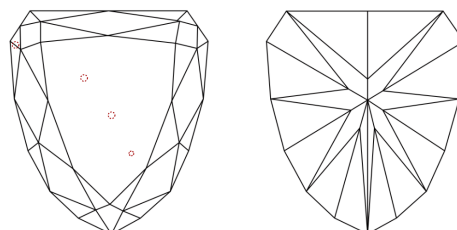
Comments: This Laboratory Grown Diamond was created by Chemical Vapor Deposition (CVD) growth process. Type IIa

PROPORTIONS



Sample Image Used

CLARITY CHARACTERISTICS



KEY TO SYMBOLS

Red symbols indicate internal characteristics.
Green symbols indicate external characteristics.

COLOR

D E F G H I J Faint Very Light Light

CLARITY

IF	VS ¹⁻²	VS ¹⁻²	SI ¹⁻²	I ¹⁻³
Internally Flawless	Very Very Slightly Included	Very Slightly Included	Slightly Included	Included

