



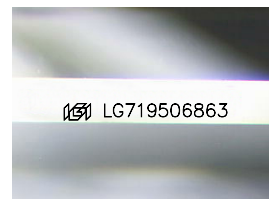
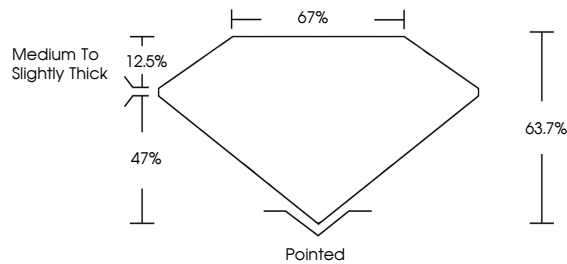
**INTERNATIONAL  
GEMOLOGICAL  
INSTITUTE**

**ELECTRONIC COPY**

## LABORATORY GROWN DIAMOND REPORT

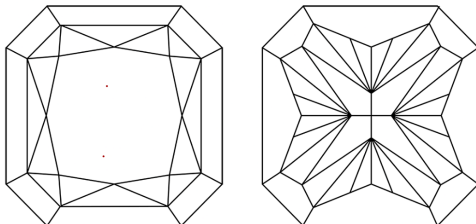
LG719506863  
Report verification at [igi.org](https://igi.org)

## PROPORTIONS



Sample Image Used

## CLARITY CHARACTERISTICS



## KEY TO SYMBOLS

Red symbols indicate internal characteristics.  
Green symbols indicate external characteristics.

**COLOR**

D E F G H I J Faint Very Light Light

## CLARITY

IF      WS<sup>1-2</sup>      VS<sup>1-2</sup>      SI<sup>1-2</sup>      I<sup>1-3</sup>

Internally Flawless	Very Very Slightly Included	Very Slightly Included	Slightly Included	Included
------------------------	--------------------------------	---------------------------	----------------------	----------



© IGI 2020, International Gemological Institute

FD - 10 20

**www.igi.org**

THIS DOCUMENT WAS PRODUCED WITH THE FOLLOWING SECURITY MEASURES: SPECIAL DOCUMENT PAPER, INK SCREENS, WATERMARK, BACKGROUND DESIGNS, HOLOGRAM AND OTHER SECURITY FEATURES NOT LISTED AND DO EXCEED DOCUMENT SECURITY INDUSTRY GUIDELINES

## LABORATORY GROWN DIAMOND REPORT



July 14, 2025

IGI Report Number **LG719506863**

Description	LABORATORY GROWN DIAMOND
-------------	--------------------------

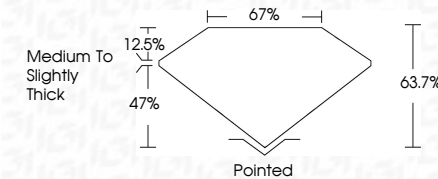
Shape and Cutting Style **CUT CORNERED SQUARE  
MODIFIED BRILLIANT**

Measurements **7.14 X 7.08 X 4.51 MM**

## GRADING RESULTS

Carat Weight **2.01 CARATS**

Color Grade	D
-------------	---

Clarity Grade **VVS 2**

### ADDITIONAL GRADING INFORMATION

Polish **EXCELLENT**

Symmetry **EXCELLENT**

Fluorescence **NONE**Inscription(s)  LG719506863

Comments: This Laboratory Grown Diamond was created by Chemical Vapor Deposition (CVD) growth process.  
Type IIa



IG

<b>JULY 14, 2025</b>					
<b>GIL REPORT NO L671960963</b>					
<b>CUT CORNERED SQUARE MODIFIED</b>					
<b>BRILLIANT</b>					
<b>7.14 X 7.08 X 4.51 MM</b>					
<b>2.01 CARATS</b>					
Color Grade	D	VWS 2			
Carat Weight		63.7%			
Table		67%			
Depth					
Girdle			Medium To slightly thick		
Culet		Poished			
Symmetry		EXCELLENT			
Fluorescence		EXCELLENT			
Inscriptions(s)		NONE			
					#GJL671960963
<b>Comments:</b>					
The Laboratory Grown Diamond was created by Chemical Vapor Deposition (CVD) growth process.					
Type IId					