



ELECTRONIC COPY

LG719505376
Report verification at igi.org



July 9, 2025
IGI Report Number LG719505376
Description LABORATORY GROWN DIAMOND
Shape and Cutting Style ROUND BRILLIANT
Measurements 6.71 - 6.74 X 4.09 MM
GRADING RESULTS
Carat Weight 1.14 CARAT
Color Grade FANCY VIVID PINK
Clarity Grade VVS 2
Cut Grade IDEAL

July 9, 2025
IGI Report Number LG719505376
Description LABORATORY GROWN DIAMOND
Shape and Cutting Style ROUND BRILLIANT
Measurements 6.71 - 6.74 X 4.09 MM

GRADING RESULTS

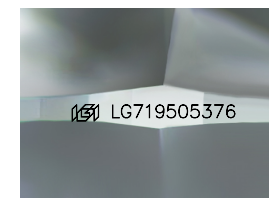
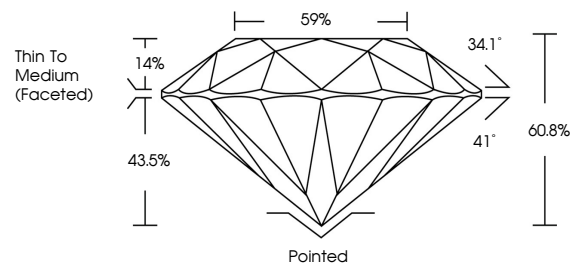
Carat Weight 1.14 CARAT
Color Grade FANCY VIVID PINK
Clarity Grade VVS 2
Cut Grade IDEAL

ADDITIONAL GRADING INFORMATION

Polish EXCELLENT
Symmetry EXCELLENT
Fluorescence SLIGHT
Inscription(s) LG719505376

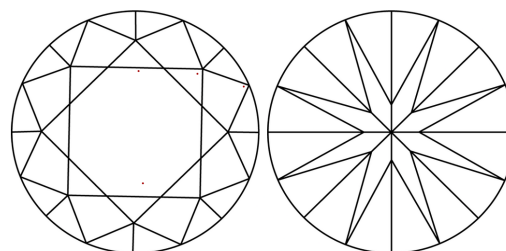
Comments: This Laboratory Grown Diamond was created by Chemical Vapor Deposition (CVD) growth process.
Indications of post-growth treatment.

PROPORTIONS



Sample Image Used

CLARITY CHARACTERISTICS



KEY TO SYMBOLS

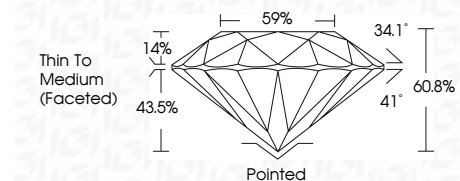
Red symbols indicate internal characteristics.
Green symbols indicate external characteristics.

COLOR

D E F G H I J Faint Very Light Light

CLARITY

IF WS 1-2 VS 1-2 SI 1-2 I 1-3
Internally Flawless Very Very Slightly Included Very Slightly Included Slightly Included Included



ADDITIONAL GRADING INFORMATION

Polish EXCELLENT
Symmetry EXCELLENT
Fluorescence SLIGHT
Inscription(s) LG719505376
Comments: This Laboratory Grown Diamond was created by Chemical Vapor Deposition (CVD) growth process.
Indications of post-growth treatment.



Summary table with columns: July 9, 2025, IGI Report No LG719505376, ROUND BRILLIANT, 6.71 - 6.74 X 4.09 MM, 1.14 CARAT, FANCY VIVID PINK, VVS 2, IDEAL, 60.8%, 59%, Thin To Medium (Faceted), Pointed, EXCELLENT, EXCELLENT, SLIGHT, LG719505376, Comments: This Laboratory Grown Diamond was created by Chemical Vapor Deposition (CVD) growth process. Indications of post-growth treatment.