



ELECTRONIC COPY

LG719504479
Report verification at igi.org



July 7, 2025
IGI Report Number LG719504479
Description LABORATORY GROWN DIAMOND
Shape and Cutting Style EMERALD CUT
Measurements 9.01 X 6.66 X 4.06 MM
GRADING RESULTS
Carat Weight 2.51 CARATS
Color Grade F
Clarity Grade VVS 2

July 7, 2025
IGI Report Number LG719504479
Description LABORATORY GROWN DIAMOND
Shape and Cutting Style EMERALD CUT
Measurements 9.01 X 6.66 X 4.06 MM

GRADING RESULTS

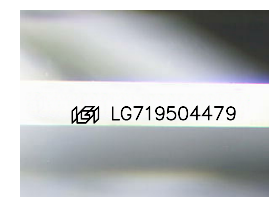
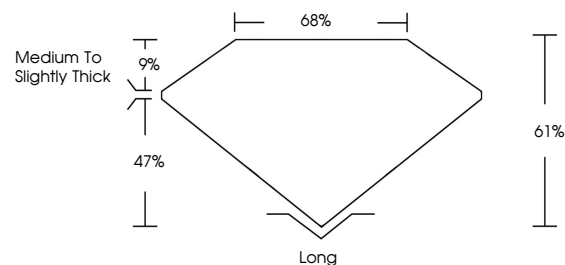
Carat Weight 2.51 CARATS
Color Grade F
Clarity Grade VVS 2

ADDITIONAL GRADING INFORMATION

Polish EXCELLENT
Symmetry EXCELLENT
Fluorescence NONE
Inscription(s) IGI LG719504479

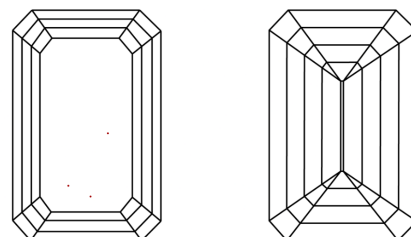
Comments: This Laboratory Grown Diamond was created by Chemical Vapor Deposition (CVD) growth process.

PROPORTIONS



Sample Image Used

CLARITY CHARACTERISTICS



KEY TO SYMBOLS

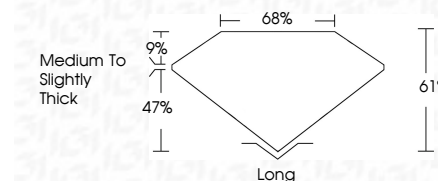
Red symbols indicate internal characteristics.
Green symbols indicate external characteristics.

COLOR

D E F G H I J Faint Very Light Light

CLARITY

IF VS 1-2 VS 1-2 SI 1-2 I 1-3
Internally Flawless Very Very Slightly Included Very Slightly Included Slightly Included Included



ADDITIONAL GRADING INFORMATION

Polish EXCELLENT
Symmetry EXCELLENT
Fluorescence NONE
Inscription(s) IGI LG719504479
Comments: This Laboratory Grown Diamond was created by Chemical Vapor Deposition (CVD) growth process.



July 7, 2025
IGI Report No LG719504479
EMERALD CUT
9.01 X 6.66 X 4.06 MM
2.51 CARATS
Color Grade F
Clarity Grade VVS 2
Depth 61%
Table 68%
Girdle Medium to Slightly Thick
Culet Long
Polish EXCELLENT
Symmetry EXCELLENT
Fluorescence NONE
Inscription(s) IGI LG719504479
Comments: This Laboratory Grown Diamond was created by Chemical Vapor Deposition (CVD) growth process.