



**ELECTRONIC COPY**

## LABORATORY GROWN DIAMOND REPORT

July 4, 2025	
IGI Report Number	LG718510199
Description	LABORATORY GROWN DIAMOND
Shape and Cutting Style	CUT CORNERED RECTANGULAR MODIFIED BRILLIANT
Measurements	10.22 X 7.15 X 4.81 MM

## GRADING RESULTS

Carat Weight	3.09 CARATS
Color Grade	D
Clarity Grade	VVS 1

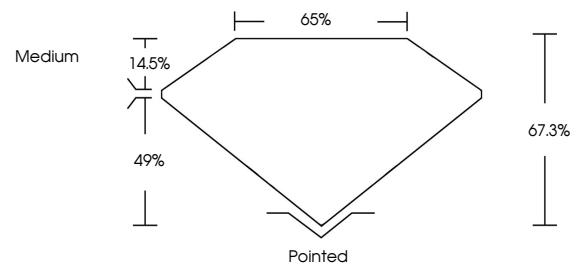
### ADDITIONAL GRADING INFORMATION

Polish	EXCELLENT
Symmetry	EXCELLENT
Fluorescence	NONE
Inscription(s)	 LG718510199

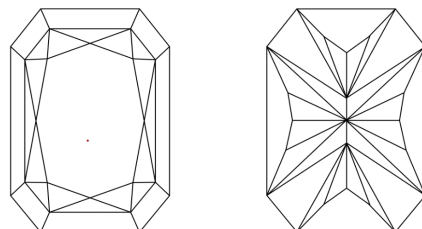
Comments: This Laboratory Grown Diamond was created by Chemical Vapor Deposition (CVD) growth process.  
Type IIa

LG718510199  
Report verification at [igi.org](https://igi.org)

## PROPORTIONS

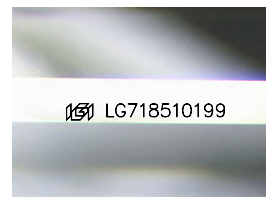


## CLARITY CHARACTERISTICS



## KEY TO SYMBOLS

Red symbols indicate internal characteristics.  
Green symbols indicate external characteristics.



Sample Image Used

**COLOR**

D E F G H I J Faint Very Light Light

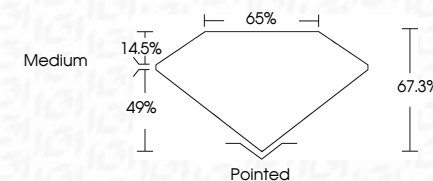
## CLARITY

IF	VS <sup>1-2</sup>	VS <sup>1-2</sup>	SI <sup>1-2</sup>	I <sup>1-3</sup>
Internally Flawless	Very Very Slightly Included	Very Slightly Included	Slightly Included	Included

## LABORATORY GROWN DIAMOND REPORT



July 4, 2025	
IGI Report Number	LG718510199
Description	LABORATORY GROWN DIAMOND
Shape and Cutting Style	CUT CORNERED RECTANGULAR MODIFIED BRILLIANT
Measurements	10.22 X 7.15 X 4.81 MM
GRADING RESULTS	
Carat Weight	3.09 CARATS
Color Grade	D
Clarity Grade	VVS 1



### ADDITIONAL GRADING INFORMATION

Polish	EXCELLENT
Symmetry	EXCELLENT
Fluorescence	NONE
Inscription(s)	 LG718510199
Comments: This Laboratory Grown Diamond was created by Chemical Vapor Deposition (CVD) growth process.	
Type IIa	



© IGI 2020, International Gemological Institute

FD - 10 20

**www.igi.org**

THIS DOCUMENT WAS PRODUCED WITH THE FOLLOWING SECURITY MEASURES: SPECIAL DOCUMENT PAPER, INK SCREENS, WATERMARK, BACKGROUND DESIGNS, HOLOGRAM AND OTHER SECURITY FEATURES NOT LISTED AND DO EXCEED DOCUMENT SECURITY INDUSTRY GUIDELINE

July 4, 2025	GI Report No. 7/18510199	
CUT CORNBED BEC. MODIFIED BRILLIANT		
10.02 X 7.16 X 4.81 MM		
Carat Weight	3.09 CARATS	
Color Grade	D	
Clarity Grade	VVS 1	
Depth	67.3%	
Table	66%	
Girdle	Medium	
Culet	Pointed	
Poish	EXCELLENT	
Symmetry	EXCELLENT	
Fluorescence	NONE	
Inscriptions(s)	#68 LG718510199	
Comments:		
		Very Green Diamond was created by Chemical Vapor Deposition (CVD) growth process.
		Type IIa