

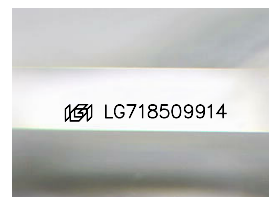
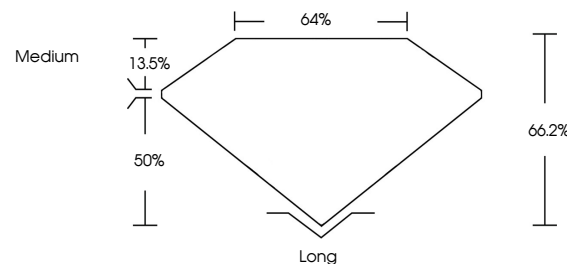


ELECTRONIC COPY

LABORATORY GROWN DIAMOND REPORT

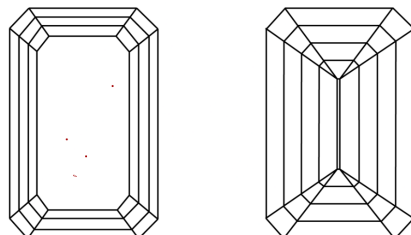
LG718509914
Report verification at igi.org

PROPORTIONS



Sample Image Used

CLARITY CHARACTERISTICS



KEY TO SYMBOLS

Red symbols indicate internal characteristics.
Green symbols indicate external characteristics.

COLOR

D E F G H I J Faint Very Light Light

CLARITY

IF WS¹⁻² VS¹⁻² SI¹⁻² I¹⁻³

| | | | | |
|------------------------|--------------------------------|---------------------------|----------------------|----------|
| Internally Flawless | Very Very Slightly Included | Very Slightly Included | Slightly Included | Included |
|------------------------|--------------------------------|---------------------------|----------------------|----------|

LABORATORY GROWN DIAMOND REPORT



July 4, 2025

IGI Report Number **LG718509914**Description **LABORATORY GROWN DIAMOND**Shape and Cutting Style **EMERALD CUT**

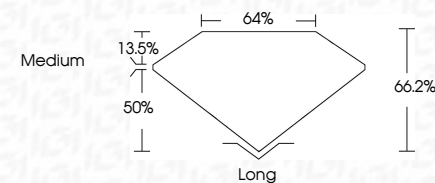
Measurements **8.71 X 6.03 X 3.99 MM**

GRADING RESULTS

Carat Weight **2.10 CARATS**

Color Grade D

Clarity Grade VS 1



ADDITIONAL GRADING INFORMATION

Polish EXCELLENT

Symmetry **EXCELLENT**Fluorescence **NONE**Inscription(s) LG718509914

Comments: This Laboratory Grown Diamond was created by Chemical Vapor Deposition (CVD) growth process.
Type IIa



IG

July 4, 2025
GI Report No LG718509914

| | | | | | | | | | | |
|-----------------------|--------------|---------------|-------|-------|--------|-------|-----------|-----------|--------------|---------------------|
| 2.10 CARATS | D | VS 1 | 66.2% | 64% | Medium | Long | EXCELLENT | EXCELLENT | NONE | Serial # 1271809214 |
| 2.71 X 6.03 X 3.99 MM | Carat Weight | Clarity Grade | Depth | Table | Girdle | Culet | Polish | Symmetry | Fluorescence | Inscriptions(s) |

Comments:
This Laboratory Grown Diamond was
created by Chemical Vapor Deposition
(CVD) growth process.

