



**ELECTRONIC COPY**

LG718505533  
Report verification at [igi.org](http://igi.org)



July 5, 2025  
IGI Report Number **LG718505533**  
Description **LABORATORY GROWN DIAMOND**  
Shape and Cutting Style **ROUND BRILLIANT**  
Measurements **7.70 - 7.73 X 4.77 MM**  
**GRADING RESULTS**  
Carat Weight **1.76 CARAT**  
Color Grade **FANCY INTENSE PINK**  
Clarity Grade **VVS 2**  
Cut Grade **IDEAL**

July 5, 2025  
IGI Report Number **LG718505533**  
Description **LABORATORY GROWN DIAMOND**  
Shape and Cutting Style **ROUND BRILLIANT**  
Measurements **7.70 - 7.73 X 4.77 MM**

**GRADING RESULTS**

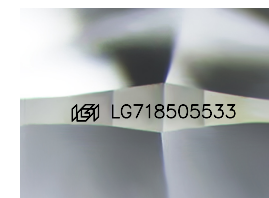
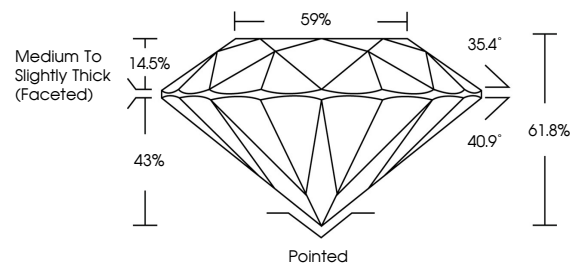
Carat Weight **1.76 CARAT**  
Color Grade **FANCY INTENSE PINK**  
Clarity Grade **VVS 2**  
Cut Grade **IDEAL**

**ADDITIONAL GRADING INFORMATION**

Polish **EXCELLENT**  
Symmetry **EXCELLENT**  
Fluorescence **SLIGHT**  
Inscription(s) **LG718505533**

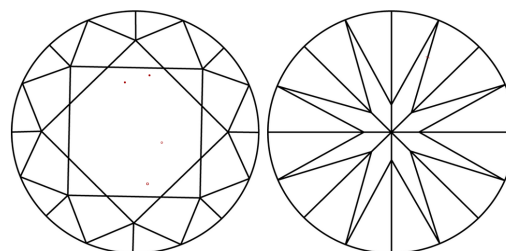
Comments: This Laboratory Grown Diamond was created by Chemical Vapor Deposition (CVD) growth process.  
Indications of post-growth treatment.

**PROPORTIONS**



Sample Image Used

**CLARITY CHARACTERISTICS**



**KEY TO SYMBOLS**

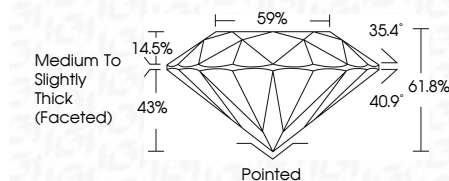
Red symbols indicate internal characteristics.  
Green symbols indicate external characteristics.

**COLOR**

D E F G H I J Faint Very Light Light

**CLARITY**

IF	VS <sup>1-2</sup>	VS <sup>1-2</sup>	SI <sup>1-2</sup>	I <sup>1-3</sup>
Internally Flawless	Very Very Slightly Included	Very Slightly Included	Slightly Included	Included



**ADDITIONAL GRADING INFORMATION**

Polish **EXCELLENT**  
Symmetry **EXCELLENT**  
Fluorescence **SLIGHT**  
Inscription(s) **LG718505533**  
Comments: This Laboratory Grown Diamond was created by Chemical Vapor Deposition (CVD) growth process.  
Indications of post-growth treatment.



July 5, 2025  
IGI Report No **LG718505533**  
**ROUND BRILLIANT**  
7.70 - 7.73 X 4.77 MM  
1.76 CARAT  
**FANCY INTENSE PINK**  
VVS 2  
**IDEAL**  
61.8%  
59%  
Medium To Slightly Thick (Faceted)  
Pointed  
**EXCELLENT**  
**EXCELLENT**  
**SLIGHT**  
 **LG718505533**  
Comments: This Laboratory Grown Diamond was created by Chemical Vapor Deposition (CVD) growth process.  
Indications of post-growth treatment.