



ELECTRONIC COPY

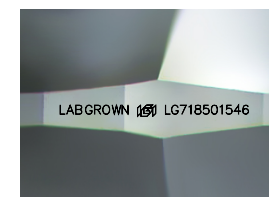
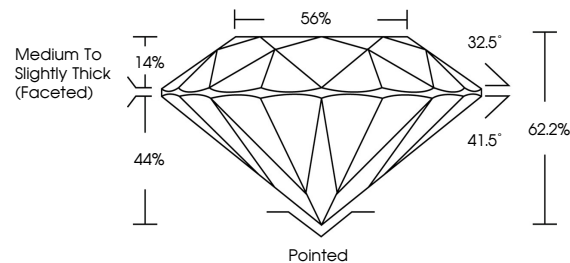
LG718501546 Report verification at igi.org



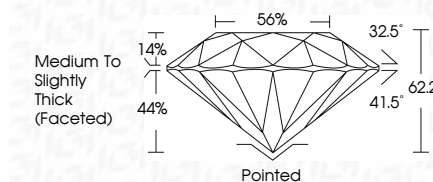
July 7, 2025 IGI Report Number LG718501546 Description LABORATORY GROWN DIAMOND Shape and Cutting Style ROUND BRILLIANT Measurements 9.38 - 9.43 X 5.86 MM GRADING RESULTS Carat Weight 3.16 CARATS Color Grade F Clarity Grade VVS 2 Cut Grade EXCELLENT

July 7, 2025 IGI Report Number LG718501546 Description LABORATORY GROWN DIAMOND Shape and Cutting Style ROUND BRILLIANT Measurements 9.38 - 9.43 X 5.86 MM GRADING RESULTS Carat Weight 3.16 CARATS Color Grade F Clarity Grade VVS 2 Cut Grade EXCELLENT

PROPORTIONS



Sample Image Used



ADDITIONAL GRADING INFORMATION

Polish EXCELLENT Symmetry EXCELLENT Fluorescence NONE Inscription(s) LABGROWN (IGI) LG718501546

Comments: This Laboratory Grown Diamond was created by Chemical Vapor Deposition (CVD) growth process. Type IIa

COLOR

D E F G H I J Faint Very Light Light

CLARITY

IF WS 1-2 VS 1-2 SI 1-2 I 1-3 Internally Flawless Very Very Slightly Included Very Slightly Included Slightly Included Included

ADDITIONAL GRADING INFORMATION

Polish EXCELLENT Symmetry EXCELLENT Fluorescence NONE Inscription(s) LABGROWN (IGI) LG718501546 Comments: This Laboratory Grown Diamond was created by Chemical Vapor Deposition (CVD) growth process. Type IIa



IGI

July 7, 2025 IGI Report No LG718501546 ROUND BRILLIANT 9.38 - 9.43 X 5.86 MM 3.16 CARATS F VVS 2 EXCELLENT 62.2% 56% Medium To Slightly Thick (Faceted) Pointed EXCELLENT EXCELLENT NONE LABGROWN (IGI) LG718501546 Comments: This Laboratory Grown Diamond was created by Chemical Vapor Deposition (CVD) growth process. Type IIa