

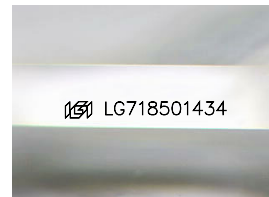
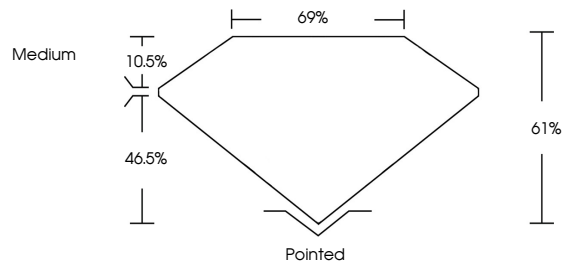


**INTERNATIONAL
GEMOLOGICAL
INSTITUTE**

ELECTRONIC COPY

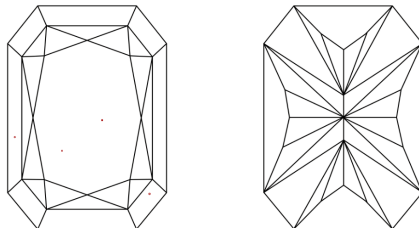
LG718501434
Report verification at igi.org

PROPORTIONS



Sample Image Used

CLARITY CHARACTERISTICS



KEY TO SYMBOLS

Red symbols indicate internal characteristics.
Green symbols indicate external characteristics.

COLOR

D E F G H I J Faint Very Light Light

CLARITY

IF WS¹⁻² VS¹⁻² SI¹⁻² I¹⁻³

Internally Flawless	Very Very Slightly Included	Very Slightly Included	Slightly Included	Included
------------------------	--------------------------------	---------------------------	----------------------	----------



© IGI 2020, International Gemological Institute

FD - 10 20

www.igi.org

THIS DOCUMENT WAS PRODUCED WITH THE FOLLOWING SECURITY MEASURES: SPECIAL DOCUMENT PAPER, INK SCREENS, WATERMARK BACKGROUND DESIGNS, HOLOGRAM AND OTHER SECURITY FEATURES NOT LISTED AND DO EXCEED DOCUMENT SECURITY INDUSTRY GUIDELINES.

LABORATORY GROWN DIAMOND REPORT



July 9, 2025

IGI Report Number **LG718501434**

Description	LABORATORY GROWN DIAMOND
-------------	--------------------------

Shape and Cutting Style

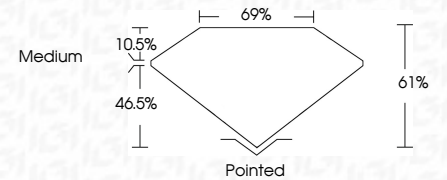
CUT CORNERED
RECTANGULAR MODIFIED
BRILLIANT

Measurements **17.33 X 11.50 X 7.02 MM**

GRADING RESULTS

Carat Weight **12.01 CARATS**

Color Grade	H
-------------	---

Clarity Grade **VVS 2**

ADDITIONAL GRADING INFORMATION

Polish **EXCELLENT**Symmetry **EXCELLENT**Fluorescence **NONE**Inscription(s)  LG718501434

Comments: This Laboratory Grown Diamond was created by Chemical Vapor Deposition (CVD) growth process.
Type IIa



IGI

July 9, 2025	IGI Report No. LG71801484	12.01 CARATS
CUT	COLOR	CLARITY
EXCELLENT	VERY SLIGHT	VVS 2
BRILLIANT	MODIFIED	61%
		65%
		Medium
		Polished
		EXCELLENT
		EXCELLENT
		NONE
		651 LG71801484

Comments: This Laboratory Grown Diamond was created by Chemical Vapor Deposition (CVD) growth process.

Type IId