

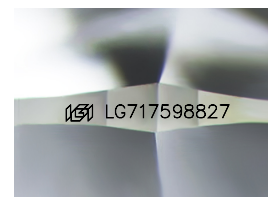
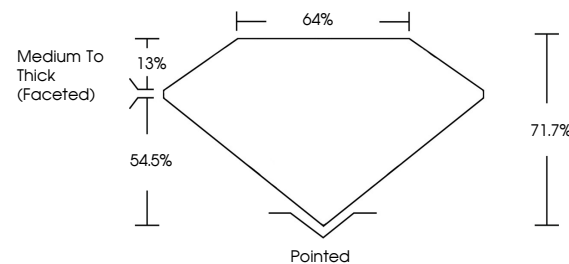


ELECTRONIC COPY

LABORATORY GROWN DIAMOND REPORT

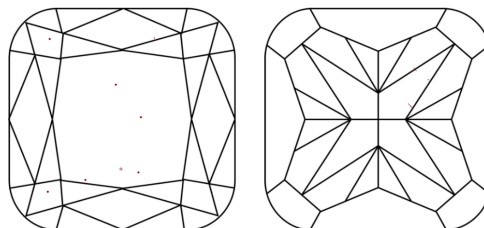
LG717598827
Report verification at igi.org

PROPORTIONS



Sample Image Used

CLARITY CHARACTERISTICS



KEY TO SYMBOLS

Red symbols indicate internal characteristics.
Green symbols indicate external characteristics.

COLOR

D E F G H I J Faint Very Light Light

CLARITY

IF VWS¹⁻² VS¹⁻² SI¹⁻² I¹⁻³

Internally Flawless	Very Very Slightly Included	Very Slightly Included	Slightly Included	Included
------------------------	--------------------------------	---------------------------	----------------------	----------



July 8, 2025

IGI Report Number **LG717598827**Description **LABORATORY GROWN DIAMOND**Shape and Cutting Style **SQUARE CUSHION MODIFIED
BRILLIANT**

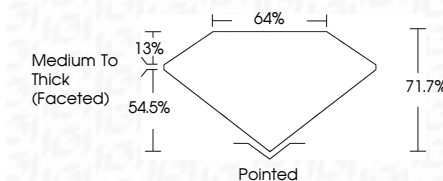
Measurements **5.72 X 5.48 X 3.93 MM**

GRADING RESULTS

Carat Weight 1.01 CARAT

Color Grade **FANCY VIVID GREEN**

Clarity Grade VS 1



ADDITIONAL GRADING INFORMATION

Polish **EXCELLENT**Symmetry **EXCELLENT**Fluorescence **NONE**Inscription(s) LG717598827

Comments: This Laboratory Grown Diamond was created by Chemical Vapor Deposition (CVD) growth process.

Indications of post-growth treatment.



© IGI 2020, International Gemological Institute

FD - 10 20

www.igi.org

THIS DOCUMENT WAS PRODUCED WITH THE FOLLOWING SECURITY MEASURES: SPECIAL DOCUMENT PAPER, INK SCREENS, WATERMARK BACKGROUND DESIGNS, HOLOGRAM AND OTHER SECURITY FEATURES NOT LISTED AND DO EXCEED DOCUMENT SECURITY INDUSTRY GUIDELINES

July 8, 2025	1.01 CARAT
GJ Report No LG71759827	FANCY VIVID GREEN
SQUARE CLUSHION MODIFIED BRILLIANT	VS 1
1.72 X 1.48 X 3.93 MM	71.7%
	64%
	Medium to Thick (faceted)
	Pointed
	EXCELLENT
	EXCELLENT
	NONE
	1681 LG71759827

Comments:

The Laboratory Grown Diamond was
 reported as a Vapor Deposition
 (VD) growth process.
 Indications of post-growth treatment.