



**ELECTRONIC COPY**

LG717598494  
Report verification at igi.org



July 7, 2025  
IGI Report Number **LG717598494**  
Description **LABORATORY GROWN DIAMOND**  
Shape and Cutting Style **SQUARE CUSHION MODIFIED BRILLIANT**  
Measurements **9.51 X 9.46 X 6.26 MM**  
**GRADING RESULTS**  
Carat Weight **5.10 CARATS**  
Color Grade **FANCY VIVID BLUE**  
Clarity Grade **VS 1**

**LABORATORY GROWN DIAMOND REPORT**

July 7, 2025  
IGI Report Number **LG717598494**  
Description **LABORATORY GROWN DIAMOND**  
Shape and Cutting Style **SQUARE CUSHION MODIFIED BRILLIANT**  
Measurements **9.51 X 9.46 X 6.26 MM**

**GRADING RESULTS**

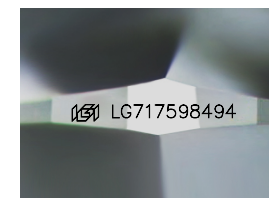
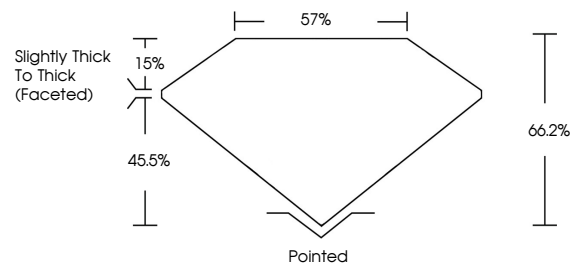
Carat Weight **5.10 CARATS**  
Color Grade **FANCY VIVID BLUE**  
Clarity Grade **VS 1**

**ADDITIONAL GRADING INFORMATION**

Polish **EXCELLENT**  
Symmetry **EXCELLENT**  
Fluorescence **NONE**  
Inscription(s) **IGI LG717598494**

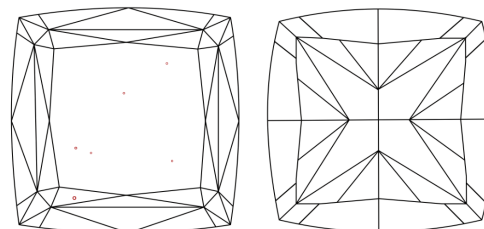
Comments: This Laboratory Grown Diamond was created by Chemical Vapor Deposition (CVD) growth process.  
Indications of post-growth treatment.

**PROPORTIONS**



Sample Image Used

**CLARITY CHARACTERISTICS**



**KEY TO SYMBOLS**

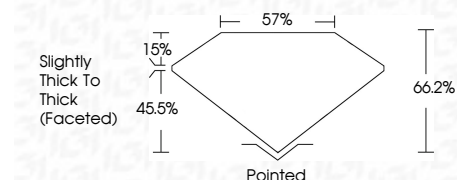
Red symbols indicate internal characteristics.  
Green symbols indicate external characteristics.

**COLOR**

D E F G H I J Faint Very Light Light

**CLARITY**

IF	VS <sup>1-2</sup>	VS <sup>1-2</sup>	SI <sup>1-2</sup>	I <sup>1-3</sup>
Internally Flawless	Very Very Slightly Included	Very Slightly Included	Slightly Included	Included



**ADDITIONAL GRADING INFORMATION**

Polish **EXCELLENT**  
Symmetry **EXCELLENT**  
Fluorescence **NONE**  
Inscription(s) **IGI LG717598494**  
Comments: This Laboratory Grown Diamond was created by Chemical Vapor Deposition (CVD) growth process.  
Indications of post-growth treatment.



July 7, 2025  
IGI Report No LG717598494  
**SQUARE CUSHION MODIFIED BRILLIANT**  
9.51 X 9.46 X 6.26 MM  
5.10 CARATS  
FANCY VIVID BLUE  
VS 1  
66.2%  
67%  
Slightly Thick To Thick (Faceted)  
Pointed  
EXCELLENT  
EXCELLENT  
NONE  
IGI LG717598494  
Comments: This Laboratory Grown Diamond was created by Chemical Vapor Deposition (CVD) growth process.  
Indications of post-growth treatment.