



ELECTRONIC COPY

LABORATORY GROWN DIAMOND REPORT

June 21, 2025	
IGI Report Number	LG717598407
Description	LABORATORY GROWN DIAMOND
Shape and Cutting Style	PRINCESS CUT
Measurements	5.42 X 5.33 X 4.03 MM

GRADING RESULTS

Carat Weight	1.08 CARAT
Color Grade	E
Clarity Grade	VVS 2

ADDITIONAL GRADING INFORMATION

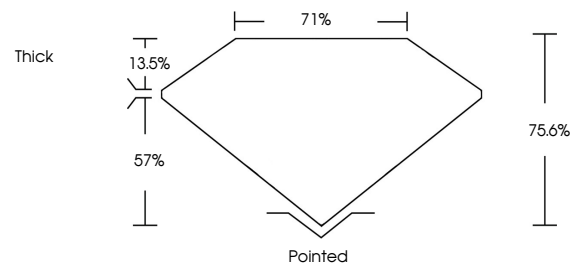
Polish	VERY GOOD
Symmetry	VERY GOOD
Fluorescence	NONE
Inscription(s)	 LG717598407

Comments: As Grown - No indication of post-growth treatment.

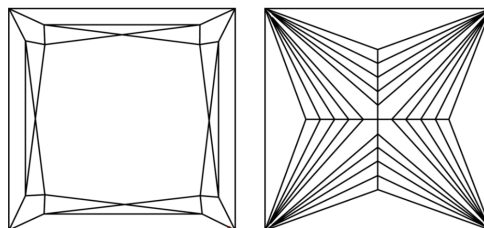
This Laboratory Grown Diamond was created by High Pressure High Temperature (HPHT) growth process.
Type II

LG717598407
Report verification at igi.org

PROPORTIONS

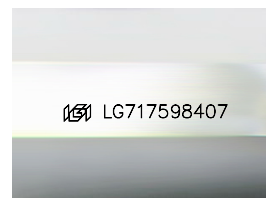


CLARITY CHARACTERISTICS



KEY TO SYMBOLS

Red symbols indicate internal characteristics.
Green symbols indicate external characteristics.



Sample Image Used

COLOR

D E F G H I J Faint Very Light Light

CLARITY

IF	VS ¹⁻²	VS ¹⁻²	SI ¹⁻²	I ¹⁻³
Internally Flawless	Very Very Slightly Included	Very Slightly Included	Slightly Included	Included

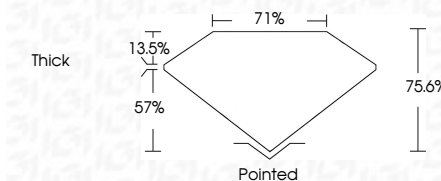
LABORATORY GROWN DIAMOND REPORT



June 21, 2025	
IGI Report Number	LG717598407
Description	LABORATORY GROWN DIAMOND
Shape and Cutting Style	PRINCESS CUT
Measurements	5.42 X 5.33 X 4.03 MM
GRADING RESULTS	
Carat Weight	1.08 CARAT
Color Grade	E
Clarity Grade	VVS 2

ADDITIONAL GRADING INFORMATION

Polish	VERY GOOD
Symmetry	VERY GOOD
Fluorescence	NONE
Inscription(s)	LG LG717598407
Comments: As Grown - No indication of post-growth treatment.	
This Laboratory Grown Diamond was created by High Pressure High Temperature (HPHT) growth process.	
Type II	



June 21, 2025
IGI Report No LG717598407
PRINCESS CIT

1.08 CARAT	VS 2	71%	Thick	Pointed	VERY GOOD	VERY GOOD	NONE	1.08 (GSI) 7509.972
Color Grade	Clarity Grade	Depth	Table	Girdle	Culet	Polish	Symmetry	Fluorescence
5.62 X 5.33 X 4.03 MM								

Comments:
As Grown - No Indication of post-growth
treatment.
This Laboratory Grown Diamond was
created by High Pressure High
Temperature (HPHT) growth process.
Type II