

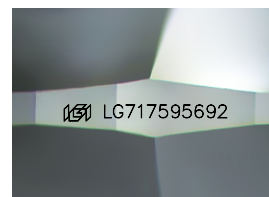
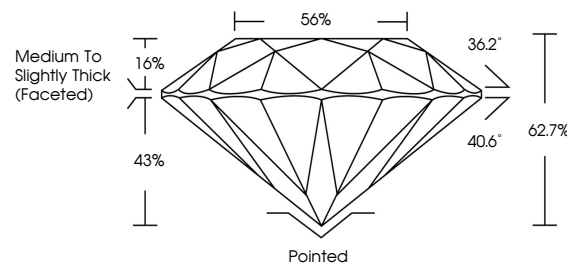


ELECTRONIC COPY

LABORATORY GROWN DIAMOND REPORT

LG717595692
Report verification at igi.org

PROPORTIONS



Sample Image Used

CLARITY CHARACTERISTICS



KEY TO SYMBOLS

Red symbols indicate internal characteristics.
Green symbols indicate external characteristics.

COLOR

D E F G H I J Faint Very Light Light

CLARITY

IF WS¹⁻² VS¹⁻² SI¹⁻² I¹⁻³

Internally Flawless	Very Very Slightly Included	Very Slightly Included	Slightly Included	Included
------------------------	--------------------------------	---------------------------	----------------------	----------



© IGI 2020, International Gemological Institute

FD - 10 20

www.igi.org

LABORATORY GROWN DIAMOND REPORT



June 30, 2025

IGI Report Number **LG717595692**

Description	LABORATORY GROWN DIAMOND
-------------	--------------------------

Shape and Cutting Style **ROUND BRILLIANT**

Measurements 6.42 - 6.45 X 4.04 MM

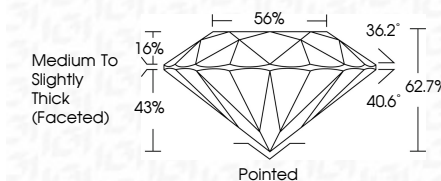
GRADING RESULTS

Carat Weight 1.04 CARAT

Color Grade D

Clarity Grade **INTERNALLY FLAWLESS**

Cut Grade **EXCELLENT**



ADDITIONAL GRADING INFORMATION

Polish **EXCELLENT**Symmetry **EXCELLENT**Fluorescence **NONE**Inscription(s) LG717595692

Comments: As Grown - No indication of post-growth treatment.

This Laboratory Grown Diamond was created by High Pressure High Temperature (HPHT) growth process.

Type II



IG

June 30, 2025		IGI Report No. I571795692		ROUND BRILLIANT	
6.42 - 4.65 x 4.04 MM		1.04 CARAT		D	
Color Weight		EXCELLENT		IF	
Carat Grade		62.7%		86%	
Clarity Grade		Medium to Slightly Thick (Faceted)		Polished	
Depth		EXCELLENT		EXCELLENT	
Table		86%		NONE	
Girdle		#611571795692		Features(s)	
Culet		Comments:		As Grown - No indication of post-growth treatment.	
Polish		This Laboratory Grown Diamond was created by High Pressure High Temperature (HPHT) growth process.		Type IIa	
Symmetry					
Fluorescence					