



# INTERNATIONAL GEMOLOGICAL INSTITUTE

ELECTRONIC COPY

## LABORATORY GROWN DIAMOND REPORT

June 24, 2025  
IGI Report Number **LG717594794**  
Description **LABORATORY GROWN DIAMOND**  
Shape and Cutting Style **HEXAGONAL MODIFIED STEP CUT**  
Measurements **7.57 X 4.29 X 2.42 MM**

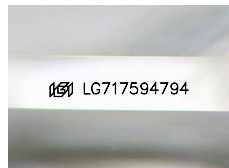
### GRADING RESULTS

Carat Weight **0.63 CARAT**  
Color Grade **F**  
Clarity Grade **VVS 1**

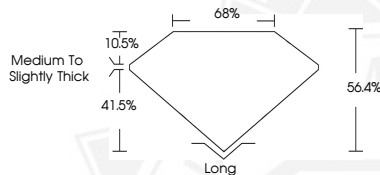
### ADDITIONAL GRADING INFORMATION

Polish **EXCELLENT**  
Symmetry **EXCELLENT**  
Fluorescence **NONE**  
Inscription(s) **IGI LG717594794**

Comments: This Laboratory Grown Diamond was created by Chemical Vapor Deposition (CVD) growth process. Type IIa



Sample Image Used



June 24, 2025

IGI Report Number **LG717594794**  
**HEXAGONAL MODIFIED STEP CUT**  
**LABORATORY GROWN DIAMOND**  
**7.57 X 4.29 X 2.42 MM**  
Carat Weight **0.63 CARAT**  
Color Grade **F**  
Clarity Grade **VVS 1**  
Polish **EXCELLENT**  
Symmetry **EXCELLENT**  
Fluorescence **NONE**  
Inscription(s) **IGI LG717594794**

Comments: This Laboratory Grown Diamond was created by Chemical Vapor Deposition (CVD) growth process. Type IIa



June 24, 2025

IGI Report Number **LG717594794**  
**HEXAGONAL MODIFIED STEP CUT**  
**LABORATORY GROWN DIAMOND**  
**7.57 X 4.29 X 2.42 MM**  
Carat Weight **0.63 CARAT**  
Color Grade **F**  
Clarity Grade **VVS 1**  
Polish **EXCELLENT**  
Symmetry **EXCELLENT**  
Fluorescence **NONE**  
Inscription(s) **IGI LG717594794**

Comments: This Laboratory Grown Diamond was created by Chemical Vapor Deposition (CVD) growth process. Type IIa



THIS DOCUMENT WAS PRODUCED WITH THE FOLLOWING SECURITY MEASURES: SPECIAL DOCUMENT PAPER, INK SCREENS, WATERMARK, BACKGROUND DESIGN, HOLOGRAM AND OTHER SECURITY FEATURES NOT LISTED AND DO EXCEED DOCUMENT SECURITY INDUSTRY GUIDELINES.

For terms & conditions and to verify this report, please visit [www.igi.org](http://www.igi.org)