

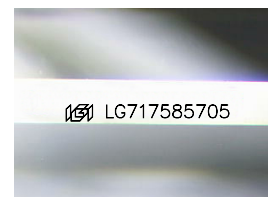
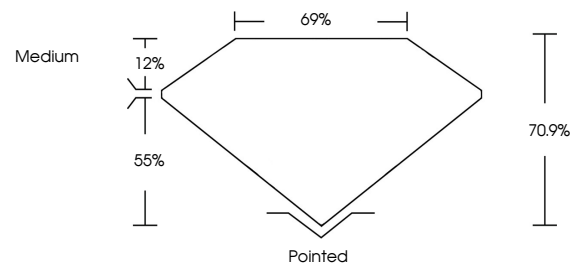


ELECTRONIC COPY

LABORATORY GROWN DIAMOND REPORT

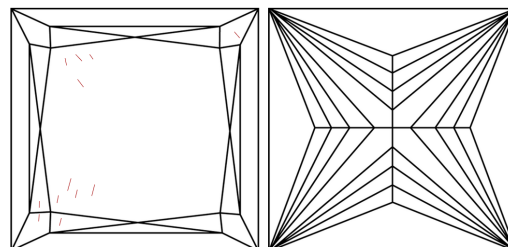
LG717585705
Report verification at igi.org

PROPORTIONS



Sample Image Used

CLARITY CHARACTERISTICS



KEY TO SYMBOLS

Red symbols indicate internal characteristics.
Green symbols indicate external characteristics.

COLOR

D E F G H I J Faint Very Light Light

CLARITY

IF	VS ¹⁻²	VS ¹⁻²	SI ¹⁻²	I ¹⁻³
Internally Flawless	Very Very Slightly Included	Very Slightly Included	Slightly Included	Included

LABORATORY GROWN DIAMOND REPORT



July 1, 2025

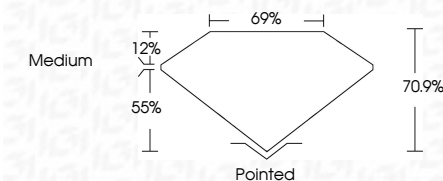
IGI Report Number **LG717585705**Description **LABORATORY GROWN DIAMOND**Shape and Cutting Style **PRINCESS CUT**

Measurements **5.47 X 5.43 X 3.85 MM**

GRADING RESULTS

Carat Weight **1.03 CARAT**

Color Grade D

Clarity Grade **VVS 2**

ADDITIONAL GRADING INFORMATION

Polish EXCELLENT

Symmetry **VERY GOOD**Fluorescence **NONE**Inscription(s) LG717585705

Comments: As Grown - No indication of post-growth treatment.

This Laboratory Grown Diamond was created by High Pressure High Temperature (HPHT) growth process.

Type II



July 1, 2025	GI Report No LG171956705	1.03 CARAT	WVS 2	Polished	EXCELLENT	VERY GOOD	NONE	4691 LG171956705
GRINCESS CUT	1.47 X 6.43 X 3.85 MM	Carat Weight	70.9%	Depth	Symmetry	Fluorescence	Inscription(s)	
	Color Grade	Clarity Grade	Table	Polish				
			Grade					

