



**ELECTRONIC COPY**

LG717585427  
Report verification at [igi.org](http://igi.org)



June 25, 2025

IGI Report Number **LG717585427**

Description **LABORATORY GROWN DIAMOND**

Shape and Cutting Style **CUT CORNERED  
RECTANGULAR MODIFIED  
BRILLIANT**

Measurements **7.27 X 5.22 X 3.65 MM**

**GRADING RESULTS**

Carat Weight **1.21 CARAT**

Color Grade **D**

Clarity Grade **VS 2**

**LABORATORY GROWN DIAMOND REPORT**

June 25, 2025

IGI Report Number **LG717585427**

Description **LABORATORY GROWN DIAMOND**

Shape and Cutting Style **CUT CORNERED RECTANGULAR  
MODIFIED BRILLIANT**

Measurements **7.27 X 5.22 X 3.65 MM**

**GRADING RESULTS**

Carat Weight **1.21 CARAT**

Color Grade **D**

Clarity Grade **VS 2**

**ADDITIONAL GRADING INFORMATION**

Polish **EXCELLENT**

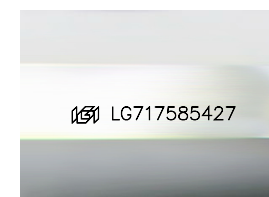
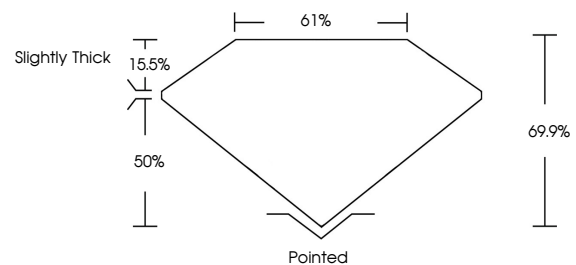
Symmetry **EXCELLENT**

Fluorescence **NONE**

Inscription(s) **IGI LG717585427**

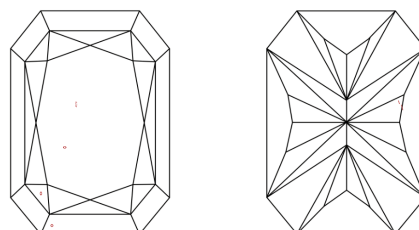
Comments: This Laboratory Grown Diamond was created by Chemical Vapor Deposition (CVD) growth process. Type IIa

**PROPORTIONS**



Sample Image Used

**CLARITY CHARACTERISTICS**



**KEY TO SYMBOLS**

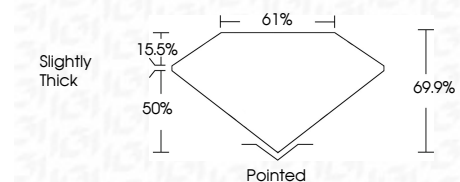
Red symbols indicate internal characteristics.  
Green symbols indicate external characteristics.

**COLOR**

D E F G H I J Faint Very Light Light

**CLARITY**

IF	VS <sup>1-2</sup>	VS <sup>1-2</sup>	SI <sup>1-2</sup>	I <sup>1-3</sup>
Internally Flawless	Very Very Slightly Included	Very Slightly Included	Slightly Included	Included



**ADDITIONAL GRADING INFORMATION**

Polish **EXCELLENT**

Symmetry **EXCELLENT**

Fluorescence **NONE**

Inscription(s) **IGI LG717585427**

Comments: This Laboratory Grown Diamond was created by Chemical Vapor Deposition (CVD) growth process. Type IIa



June 25, 2025  
IGI Report No LG717585427  
CUT CORNERED RECT. MODIFIED BRILLIANT  
1.21 CARAT  
D  
7.27 X 5.22 X 3.65 MM  
Color Grade VS 2  
Depth 69.9%  
Table 61%  
Girdle Slightly Thick  
Culet Pointed  
Polish EXCELLENT  
Symmetry EXCELLENT  
Fluorescence NONE  
Inscription(s) IGI LG717585427

Comments: This Laboratory Grown Diamond was created by Chemical Vapor Deposition (CVD) growth process. Type IIa