



ELECTRONIC COPY

LABORATORY GROWN DIAMOND REPORT

August 8, 2025	
IGI Report Number	LG717581654
Description	LABORATORY GROWN DIAMOND
Shape and Cutting Style	ROUND BRILLIANT
Measurements	10.81 - 10.84 X 6.39 MM

GRADING RESULTS

Carat Weight	4.60 CARATS
Color Grade	E
Clarity Grade	VS 1
Cut Grade	EXCELLENT

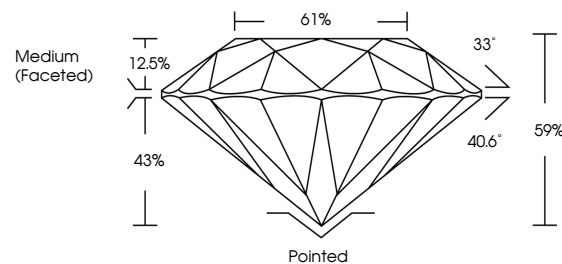
ADDITIONAL GRADING INFORMATION

Polish	EXCELLENT
Symmetry	EXCELLENT
Fluorescence	NONE
Inscription(s)	15 LG717581654

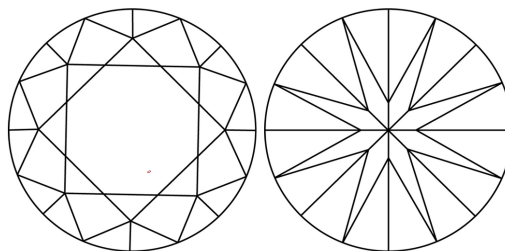
Comments: This Laboratory Grown Diamond was created by Chemical Vapor Deposition (CVD) growth process.
Type IIa

LG717581654
Report verification at lgi.org

PROPORTIONS

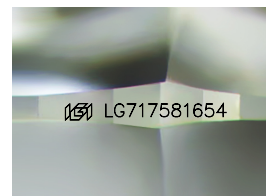


CLARITY CHARACTERISTICS



KEY TO SYMBOLS

Red symbols indicate internal characteristics.
Green symbols indicate external characteristics.



Sample Image Used

COLOR

D E F G H I J Faint Very Light Light

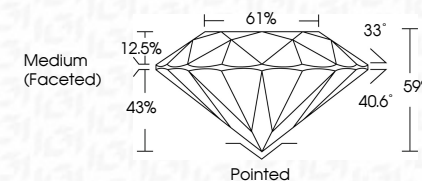
CLARITY

IF VS¹⁻² VS¹⁻² S¹⁻² |¹⁻³

Internally Flawless	Very Very Slightly Included	Very Slightly Included	Slightly Included	Included
------------------------	--------------------------------	---------------------------	----------------------	----------



August 8, 2025	
IGI Report Number	LG717581654
Description	LABORATORY GROWN DIAMOND
Shape and Cutting Style	ROUND BRILLIANT
Measurements	10.81 - 10.84 X 6.39 MM
GRADING RESULTS	
Carat Weight	4.60 CARATS
Color Grade	E
Clarity Grade	VS 1
Cut Grade	EXCELLENT



ADDITIONAL GRADING INFORMATION

Polish	EXCELLENT
Symmetry	EXCELLENT
Fluorescence	NONE
Inscription(s)	 LG717581654
<p>Comments: This Laboratory Grown Diamond was created by Chemical Vapor Deposition (CVD) growth process.</p> <p>Type IIa</p>	



© IGI 2020, International Gemological Institute

FD - 10 20

www.igi.org

THIS DOCUMENT WAS PRODUCED WITH THE FOLLOWING SECURITY MEASURES: SPECIAL DOCUMENT PAPER, INK SCREENS, WATERMARK, BACKGROUND DESIGNS, HOLOGRAM AND OTHER SECURITY FEATURES NOT LISTED AND DO EXCEED DOCUMENT SECURITY INDUSTRY GUIDELINES

August 8, 2025	GI Report No. G1717581654	ROUND BRILLIANT	10.81 - 10.84 X 6.39 MM	Carat Weight	4.60 CARATS	E	VS 1	EXCELLENT	99%	61%	Medium (Faceted)	Pointed	EXCELLENT	EXCELLENT	NONE	(#) G1717581654	Comments: Created by Crown Diamond usa Created by Chemical Vapor Deposition CVD growth process. type IIG
				Color Grade								Culet	Heish	Symmetry	Fluorescence	Inscriptions(s)	
				Clarity Grade								Depth					
												Table					
												Girdle					