



ELECTRONIC COPY

LG717580909
Report verification at igi.org



July 29, 2025
IGI Report Number **LG717580909**
Description **LABORATORY GROWN DIAMOND**
Shape and Cutting Style **EMERALD CUT**
Measurements **7.26 X 5.27 X 3.41 MM**
GRADING RESULTS
Carat Weight **1.25 CARAT**
Color Grade **FANCY INTENSE ORANGY PINK**
Clarity Grade **VVS 2**

LABORATORY GROWN DIAMOND REPORT

July 29, 2025
IGI Report Number **LG717580909**
Description **LABORATORY GROWN DIAMOND**
Shape and Cutting Style **EMERALD CUT**
Measurements **7.26 X 5.27 X 3.41 MM**

GRADING RESULTS

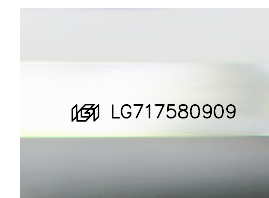
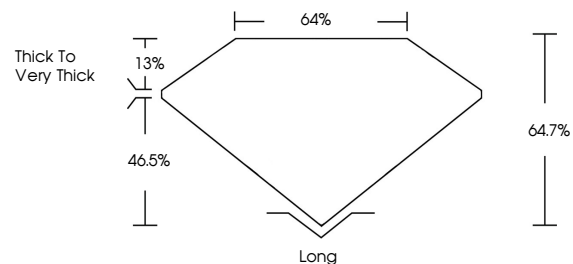
Carat Weight **1.25 CARAT**
Color Grade **FANCY INTENSE ORANGY PINK**
Clarity Grade **VVS 2**

ADDITIONAL GRADING INFORMATION

Polish **VERY GOOD**
Symmetry **VERY GOOD**
Fluorescence **STRONG**
Inscription(s) **IGI LG717580909**

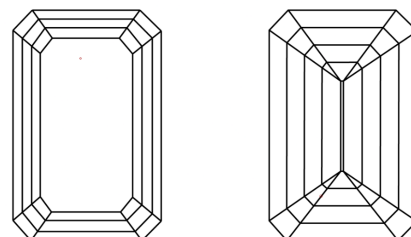
Comments: This Laboratory Grown Diamond was created by Chemical Vapor Deposition (CVD) growth process. Indications of post-growth treatment.

PROPORTIONS



Sample Image Used

CLARITY CHARACTERISTICS



KEY TO SYMBOLS

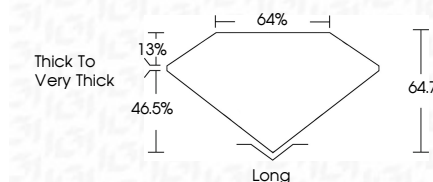
Red symbols indicate internal characteristics.
Green symbols indicate external characteristics.

COLOR

D E F G H I J Faint Very Light Light

CLARITY

IF	VS ¹⁻²	VS ¹⁻²	SI ¹⁻²	I ¹⁻³
Internally Flawless	Very Very Slightly Included	Very Slightly Included	Slightly Included	Included



ADDITIONAL GRADING INFORMATION

Polish **VERY GOOD**
Symmetry **VERY GOOD**
Fluorescence **STRONG**
Inscription(s) **IGI LG717580909**
Comments: This Laboratory Grown Diamond was created by Chemical Vapor Deposition (CVD) growth process. Indications of post-growth treatment.



July 29, 2025
IGI Report No **LG717580909**
EMERALD CUT
1.25 CARAT
Carat Weight
FANCY INTENSE ORANGY PINK
Color Grade
VVS 2
Clarity Grade
64.7%
Table
64%
Girdle
Thick to Very Thick
Culet
Long
Polish
VERY GOOD
Symmetry
VERY GOOD
Fluorescence
STRONG
Inscription(s)
IGI LG717580909
Comments: This Laboratory Grown Diamond was created by Chemical Vapor Deposition (CVD) growth process. Indications of post-growth treatment.