



ELECTRONIC COPY

LG717580908
Report verification at igi.org



July 29, 2025

IGI Report Number **LG717580908**

Description **LABORATORY GROWN DIAMOND**

Shape and Cutting Style **EMERALD CUT**

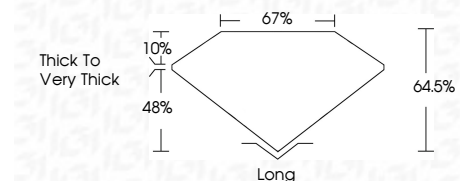
Measurements **7.38 X 5.15 X 3.32 MM**

GRADING RESULTS

Carat Weight **1.26 CARAT**

Color Grade **FANCY INTENSE PINK**

Clarity Grade **VS 1**



ADDITIONAL GRADING INFORMATION

Polish **VERY GOOD**

Symmetry **VERY GOOD**

Fluorescence **STRONG**

Inscription(s) **IGI LG717580908**

Comments: This Laboratory Grown Diamond was created by Chemical Vapor Deposition (CVD) growth process.

Indications of post-growth treatment.

Secondary color: Orange



July 29, 2025	IGI Report No LG717580908	EMERALD CUT	7.38 X 5.15 X 3.32 MM	1.26 CARAT	FANCY INTENSE PINK	VS 1	64.5%	67%	Thick to Very Thick	Long	VERY GOOD	VERY GOOD	STRONG	IGI LG717580908
<p>Comments: This Laboratory Grown Diamond was created by Chemical Vapor Deposition (CVD) growth process. Indications of post-growth treatment. Secondary color: Orange</p>														

LABORATORY GROWN DIAMOND REPORT

July 29, 2025

IGI Report Number **LG717580908**

Description **LABORATORY GROWN DIAMOND**

Shape and Cutting Style **EMERALD CUT**

Measurements **7.38 X 5.15 X 3.32 MM**

GRADING RESULTS

Carat Weight **1.26 CARAT**

Color Grade **FANCY INTENSE PINK**

Clarity Grade **VS 1**

ADDITIONAL GRADING INFORMATION

Polish **VERY GOOD**

Symmetry **VERY GOOD**

Fluorescence **STRONG**

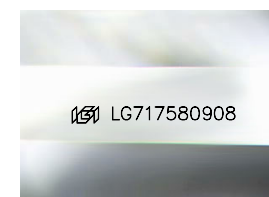
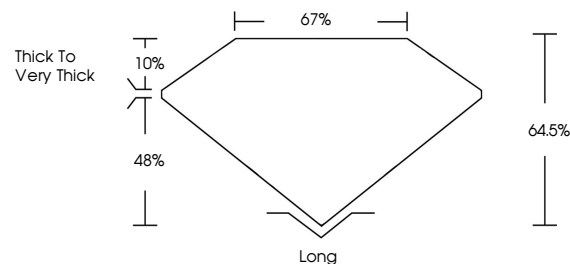
Inscription(s) **IGI LG717580908**

Comments: This Laboratory Grown Diamond was created by Chemical Vapor Deposition (CVD) growth process.

Indications of post-growth treatment.

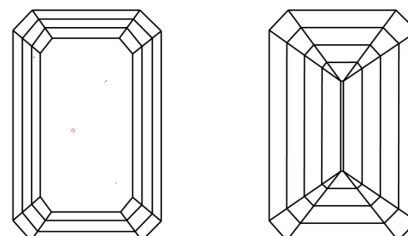
Secondary color: Orange

PROPORTIONS



Sample Image Used

CLARITY CHARACTERISTICS



KEY TO SYMBOLS

Red symbols indicate internal characteristics.
Green symbols indicate external characteristics.

COLOR

D E F G H I J Faint Very Light Light

CLARITY

IF WS¹⁻² VS¹⁻² SI¹⁻² I¹⁻³

Internally Flawless Very Very Slightly Included Very Slightly Included Slightly Included Included