



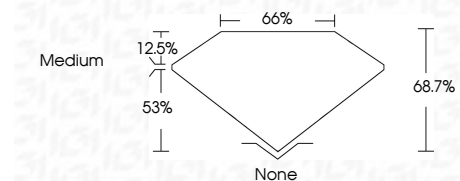
ELECTRONIC COPY

LG717580905
Report verification at igi.org



July 29, 2025
IGI Report Number **LG717580905**
Description **LABORATORY GROWN DIAMOND**
Shape and Cutting Style **PRINCESS CUT**
Measurements **5.62 X 5.59 X 3.84 MM**

GRADING RESULTS
Carat Weight **1.06 CARAT**
Color Grade **FANCY VIVID ORANGE PINK**
Clarity Grade **VS 1**



ADDITIONAL GRADING INFORMATION
Polish **EXCELLENT**
Symmetry **VERY GOOD**
Fluorescence **STRONG**
Inscription(s) **IGI LG717580905**
Comments: This Laboratory Grown Diamond was created by Chemical Vapor Deposition (CVD) growth process. Indications of post-growth treatment.



July 29, 2025
IGI Report No LG717580905
PRINCESS CUT
1.06 CARAT
5.62 X 5.59 X 3.84 MM
FANCY VIVID ORANGE PINK
VS 1
68.7%
53%
Medium
None
EXCELLENT
VERY GOOD
STRONG
IGI LG717580905
Comments: This Laboratory Grown Diamond was created by Chemical Vapor Deposition (CVD) growth process. Indications of post-growth treatment.

LABORATORY GROWN DIAMOND REPORT

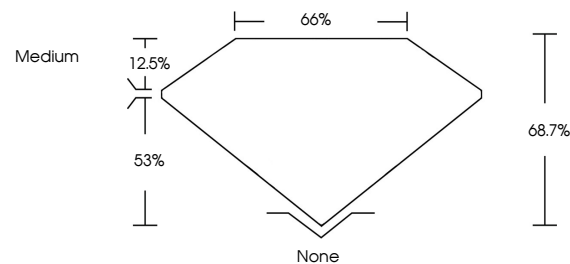
July 29, 2025
IGI Report Number **LG717580905**
Description **LABORATORY GROWN DIAMOND**
Shape and Cutting Style **PRINCESS CUT**
Measurements **5.62 X 5.59 X 3.84 MM**

GRADING RESULTS
Carat Weight **1.06 CARAT**
Color Grade **FANCY VIVID ORANGE PINK**
Clarity Grade **VS 1**

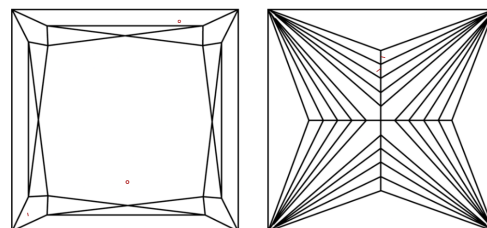
ADDITIONAL GRADING INFORMATION
Polish **EXCELLENT**
Symmetry **VERY GOOD**
Fluorescence **STRONG**
Inscription(s) **IGI LG717580905**

Comments: This Laboratory Grown Diamond was created by Chemical Vapor Deposition (CVD) growth process. Indications of post-growth treatment.

PROPORTIONS

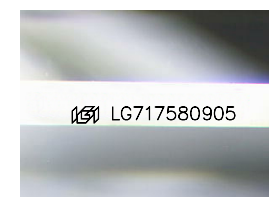


CLARITY CHARACTERISTICS



KEY TO SYMBOLS

Red symbols indicate internal characteristics.
Green symbols indicate external characteristics.



Sample Image Used

COLOR

D E F G H I J Faint Very Light Light

CLARITY

IF	VS ¹⁻²	VS ¹⁻²	SI ¹⁻²	I ¹⁻³
Internally Flawless	Very Very Slightly Included	Very Slightly Included	Slightly Included	Included

