



ELECTRONIC COPY

LG717580897
Report verification at igi.org



July 29, 2025
IGI Report Number LG717580897
Description LABORATORY GROWN DIAMOND
Shape and Cutting Style CUSHION MODIFIED BRILLIANT
Measurements 11.51 X 5.83 X 3.93 MM
GRADING RESULTS
Carat Weight 2.10 CARATS
Color Grade FANCY VIVID PINK ORANGE
Clarity Grade VVS 2

LABORATORY GROWN DIAMOND REPORT

July 29, 2025
IGI Report Number LG717580897
Description LABORATORY GROWN DIAMOND
Shape and Cutting Style CUSHION MODIFIED BRILLIANT
Measurements 11.51 X 5.83 X 3.93 MM

GRADING RESULTS

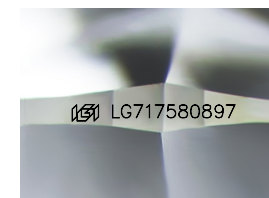
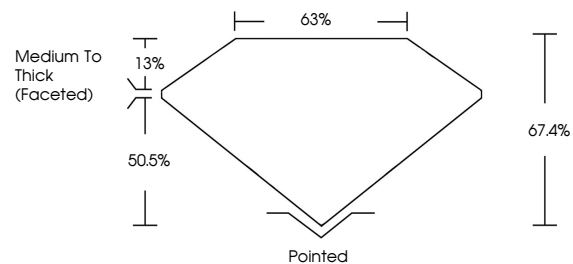
Carat Weight 2.10 CARATS
Color Grade FANCY VIVID PINK ORANGE
Clarity Grade VVS 2

ADDITIONAL GRADING INFORMATION

Polish EXCELLENT
Symmetry EXCELLENT
Fluorescence STRONG
Inscription(s) IGI LG717580897

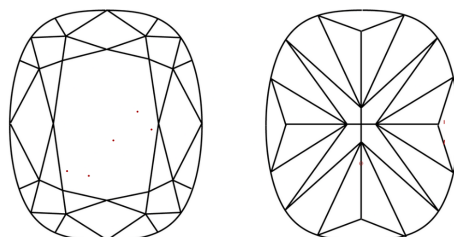
Comments: This Laboratory Grown Diamond was created by Chemical Vapor Deposition (CVD) growth process. Indications of post-growth treatment.

PROPORTIONS



Sample Image Used

CLARITY CHARACTERISTICS



KEY TO SYMBOLS

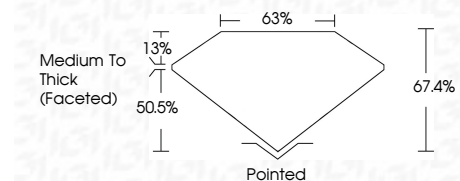
Red symbols indicate internal characteristics.
Green symbols indicate external characteristics.

COLOR

D E F G H I J Faint Very Light Light

CLARITY

IF VVS 1-2 VS 1-2 SI 1-2 I 1-3
Internally Flawless Very Very Slightly Included Very Slightly Included Slightly Included Included



ADDITIONAL GRADING INFORMATION

Polish EXCELLENT
Symmetry EXCELLENT
Fluorescence STRONG
Inscription(s) IGI LG717580897
Comments: This Laboratory Grown Diamond was created by Chemical Vapor Deposition (CVD) growth process. Indications of post-growth treatment.



July 29, 2025
IGI Report No LG717580897
CUSHION MODIFIED BRILLIANT
2.10 CARATS
Carat Weight
FANCY VIVID PINK ORANGE
Color Grade
VVS 2
Clarity Grade
11.51 X 5.83 X 3.93 MM
Depth 67.4%
Table 63%
Girdle Medium To Thick (Faceted)
Culet Pointed
Polish EXCELLENT
Symmetry EXCELLENT
Fluorescence STRONG
Inscription(s) IGI LG717580897
Comments: This Laboratory Grown Diamond was created by Chemical Vapor Deposition (CVD) growth process. Indications of post-growth treatment.