



ELECTRONIC COPY

LG717580895
Report verification at igi.org



July 28, 2025
IGI Report Number **LG717580895**
Description **LABORATORY GROWN DIAMOND**
Shape and Cutting Style **EMERALD CUT**
Measurements **7.24 X 5.25 X 3.42 MM**
GRADING RESULTS
Carat Weight **1.26 CARAT**
Color Grade **FANCY INTENSE ORANGY PINK**
Clarity Grade **VS 1**

LABORATORY GROWN DIAMOND REPORT

July 28, 2025
IGI Report Number **LG717580895**
Description **LABORATORY GROWN DIAMOND**
Shape and Cutting Style **EMERALD CUT**
Measurements **7.24 X 5.25 X 3.42 MM**

GRADING RESULTS

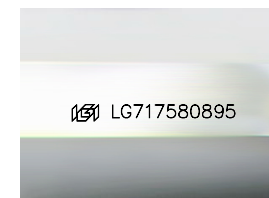
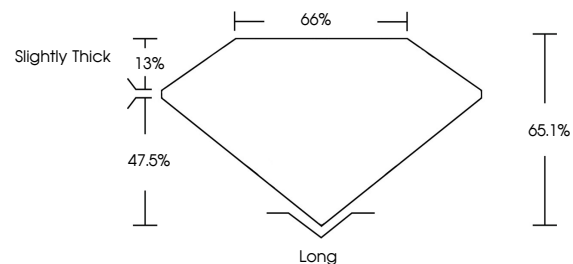
Carat Weight **1.26 CARAT**
Color Grade **FANCY INTENSE ORANGY PINK**
Clarity Grade **VS 1**

ADDITIONAL GRADING INFORMATION

Polish **EXCELLENT**
Symmetry **EXCELLENT**
Fluorescence **STRONG**
Inscription(s) **IGI LG717580895**

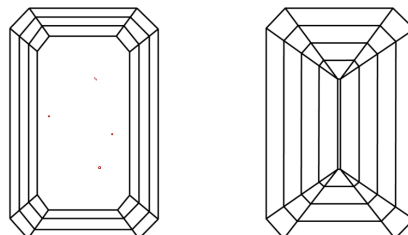
Comments: This Laboratory Grown Diamond was created by Chemical Vapor Deposition (CVD) growth process. Indications of post-growth treatment.

PROPORTIONS



Sample Image Used

CLARITY CHARACTERISTICS



KEY TO SYMBOLS

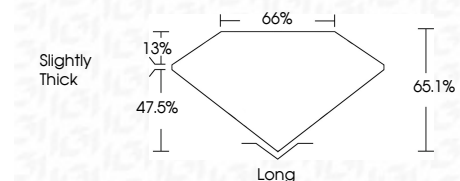
Red symbols indicate internal characteristics.
Green symbols indicate external characteristics.

COLOR

D E F G H I J Faint Very Light Light

CLARITY

IF	WS ¹⁻²	VS ¹⁻²	SI ¹⁻²	I ¹⁻³
Internally Flawless	Very Very Slightly Included	Very Slightly Included	Slightly Included	Included



ADDITIONAL GRADING INFORMATION

Polish **EXCELLENT**
Symmetry **EXCELLENT**
Fluorescence **STRONG**
Inscription(s) **IGI LG717580895**
Comments: This Laboratory Grown Diamond was created by Chemical Vapor Deposition (CVD) growth process. Indications of post-growth treatment.



July 28, 2025
IGI Report No LG717580895
EMERALD CUT
1.26 CARAT
Carat Weight
Color Grade **FANCY INTENSE ORANGY PINK**
Clarity Grade **VS 1**
Depth **65.1%**
Table **66%**
Girdle **Slightly Thick**
Culet **Long**
Polish **EXCELLENT**
Symmetry **EXCELLENT**
Fluorescence **STRONG**
Inscription(s) **IGI LG717580895**
Comments: This Laboratory Grown Diamond was created by Chemical Vapor Deposition (CVD) growth process. Indications of post-growth treatment.