



ELECTRONIC COPY

LG717579854 Report verification at igi.org



July 2, 2025 IGI Report Number LG717579854 Description LABORATORY GROWN DIAMOND Shape and Cutting Style CUT CORNERED RECTANGULAR MODIFIED BRILLIANT Measurements 10.15 X 7.75 X 5.09 MM GRADING RESULTS Carat Weight 3.83 CARATS Color Grade FANCY INTENSE GREEN Clarity Grade VS 1

LABORATORY GROWN DIAMOND REPORT

July 2, 2025 IGI Report Number LG717579854 Description LABORATORY GROWN DIAMOND Shape and Cutting Style CUT CORNERED RECTANGULAR MODIFIED BRILLIANT Measurements 10.15 X 7.75 X 5.09 MM

GRADING RESULTS

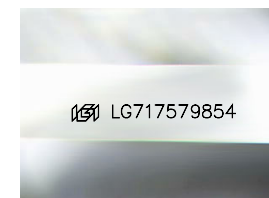
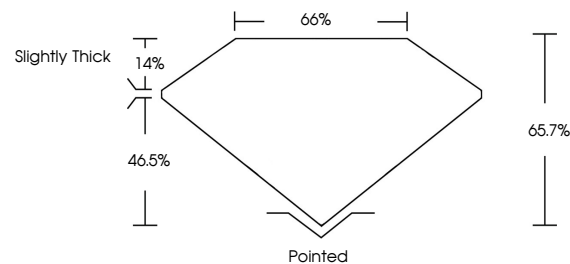
Carat Weight 3.83 CARATS Color Grade FANCY INTENSE GREEN Clarity Grade VS 1

ADDITIONAL GRADING INFORMATION

Polish EXCELLENT Symmetry EXCELLENT Fluorescence NONE Inscription(s) LG717579854

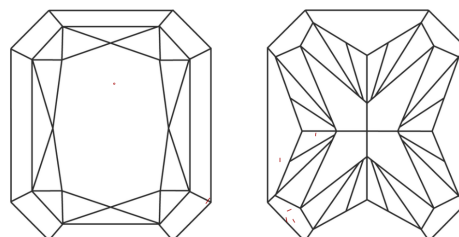
Comments: This Laboratory Grown Diamond was created by Chemical Vapor Deposition (CVD) growth process. Indications of post-growth treatment.

PROPORTIONS



Sample Image Used

CLARITY CHARACTERISTICS



KEY TO SYMBOLS

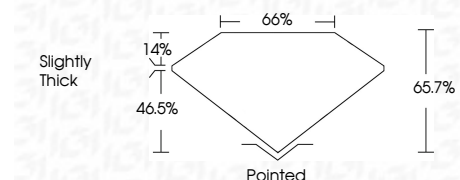
Red symbols indicate internal characteristics. Green symbols indicate external characteristics.

COLOR

D E F G H I J Faint Very Light Light

CLARITY

IF WS 1-2 VS 1-2 SI 1-2 I 1-3 Internally Flawless Very Very Slightly Included Very Slightly Included Slightly Included Included



ADDITIONAL GRADING INFORMATION

Polish EXCELLENT Symmetry EXCELLENT Fluorescence NONE Inscription(s) LG717579854 Comments: This Laboratory Grown Diamond was created by Chemical Vapor Deposition (CVD) growth process. Indications of post-growth treatment.



July 2, 2025 IGI Report No LG717579854 CUT CORNERED RECT. MODIFIED BRILLIANT 10.15 X 7.75 X 5.09 MM 3.83 CARATS FANCY INTENSE GREEN VS 1 65.7% 65% Slightly Thick Pointed EXCELLENT EXCELLENT NONE NONE LG717579854 Comments: This Laboratory Grown Diamond was created by Chemical Vapor Deposition (CVD) growth process. Indications of post-growth treatment.