



**ELECTRONIC COPY**

LG717567399  
Report verification at igi.org



September 26, 2025  
IGI Report Number **LG717567399**  
Description **LABORATORY GROWN DIAMOND**  
Shape and Cutting Style **CUT CORNERED  
RECTANGULAR MODIFIED  
BRILLIANT**

Measurements **10.28 X 7.17 X 4.92 MM**

**GRADING RESULTS**

Carat Weight **3.05 CARATS**  
Color Grade **G**  
Clarity Grade **VS 2**

September 26, 2025  
IGI Report Number **LG717567399**  
Description **LABORATORY GROWN DIAMOND**  
Shape and Cutting Style **CUT CORNERED RECTANGULAR  
MODIFIED BRILLIANT**  
Measurements **10.28 X 7.17 X 4.92 MM**

**GRADING RESULTS**

Carat Weight **3.05 CARATS**  
Color Grade **G**  
Clarity Grade **VS 2**

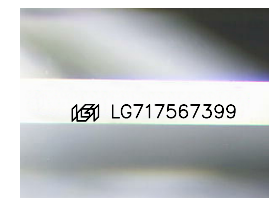
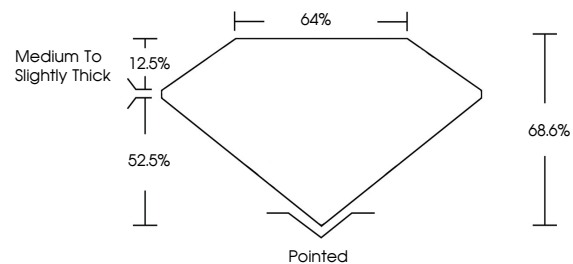
**ADDITIONAL GRADING INFORMATION**

Polish **EXCELLENT**  
Symmetry **EXCELLENT**  
Fluorescence **NONE**

Inscription(s) **IGI LG717567399**

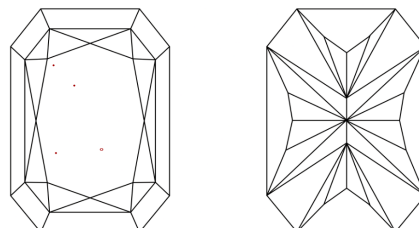
Comments: This Laboratory Grown Diamond was created by Chemical Vapor Deposition (CVD) growth process. Type IIa

**PROPORTIONS**



Sample Image Used

**CLARITY CHARACTERISTICS**



**KEY TO SYMBOLS**

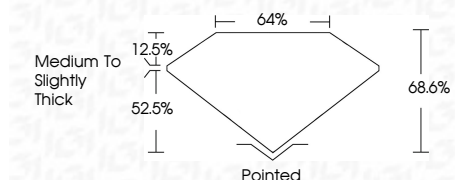
Red symbols indicate internal characteristics.  
Green symbols indicate external characteristics.

**COLOR**

D E F G H I J Faint Very Light Light

**CLARITY**

| FL       | IF                  | VS <sup>1-2</sup>           | VS <sup>1-2</sup>      | SI <sup>1-2</sup> | I <sup>1-3</sup> |
|----------|---------------------|-----------------------------|------------------------|-------------------|------------------|
| Flawless | Internally Flawless | Very Very Slightly Included | Very Slightly Included | Slightly Included | Included         |



**ADDITIONAL GRADING INFORMATION**

Polish **EXCELLENT**  
Symmetry **EXCELLENT**  
Fluorescence **NONE**  
Inscription(s) **IGI LG717567399**

Comments: This Laboratory Grown Diamond was created by Chemical Vapor Deposition (CVD) growth process. Type IIa



**IGI**



September 26, 2025  
IGI Report No LG717567399  
CUT CORNERED RECT. MODIFIED BRILLIANT  
10.28 X 7.17 X 4.92 MM  
Carat Weight 3.05 CARATS  
Color Grade G  
Clarity Grade VS 2  
Table 68.6%  
Girdle 44%  
Medium to Slightly Thick  
Culet Pointed  
Polish EXCELLENT  
Symmetry EXCELLENT  
Fluorescence NONE  
Inscription(s) IGI LG717567399

Comments: This Laboratory Grown Diamond was created by Chemical Vapor Deposition (CVD) growth process. Type IIa