



ELECTRONIC COPY

LG717564673
Report verification at igi.org



June 20, 2025
IGI Report Number LG717564673
Description LABORATORY GROWN DIAMOND
Shape and Cutting Style ROUND BRILLIANT
Measurements 10.32 - 10.36 X 6.28 MM
GRADING RESULTS
Carat Weight 4.09 CARATS
Color Grade E
Clarity Grade VVS 2
Cut Grade IDEAL

June 20, 2025
IGI Report Number LG717564673
Description LABORATORY GROWN DIAMOND
Shape and Cutting Style ROUND BRILLIANT
Measurements 10.32 - 10.36 X 6.28 MM

GRADING RESULTS

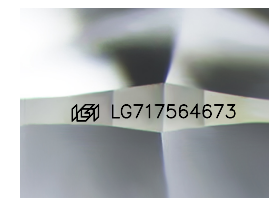
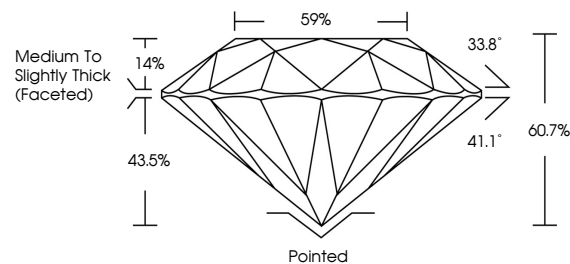
Carat Weight 4.09 CARATS
Color Grade E
Clarity Grade VVS 2
Cut Grade IDEAL

ADDITIONAL GRADING INFORMATION

Polish EXCELLENT
Symmetry EXCELLENT
Fluorescence NONE
Inscription(s) IGI LG717564673

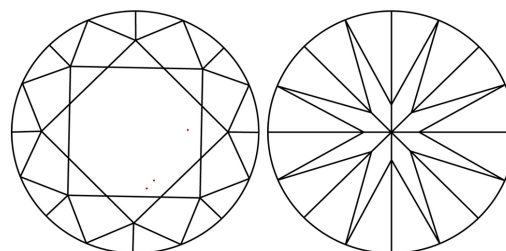
Comments: This Laboratory Grown Diamond was created by Chemical Vapor Deposition (CVD) growth process. Type IIa

PROPORTIONS



Sample Image Used

CLARITY CHARACTERISTICS



KEY TO SYMBOLS

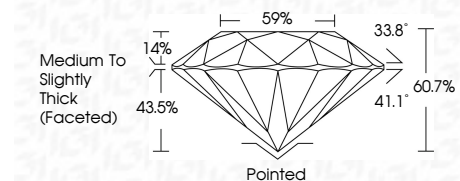
Red symbols indicate internal characteristics.
Green symbols indicate external characteristics.

COLOR

D E F G H I J Faint Very Light Light

CLARITY

IF WS 1-2 VS 1-2 SI 1-2 I 1-3
Internally Flawless Very Very Slightly Included Very Slightly Included Slightly Included Included



ADDITIONAL GRADING INFORMATION

Polish EXCELLENT
Symmetry EXCELLENT
Fluorescence NONE
Inscription(s) IGI LG717564673
Comments: This Laboratory Grown Diamond was created by Chemical Vapor Deposition (CVD) growth process. Type IIa



Summary table of report details including date, report number, description, measurements, grading results, and additional information.