



ELECTRONIC COPY

LABORATORY GROWN DIAMOND REPORT

LG717563289
Report verification at igi.org

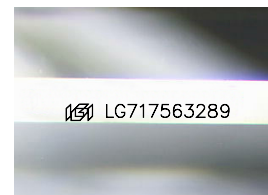
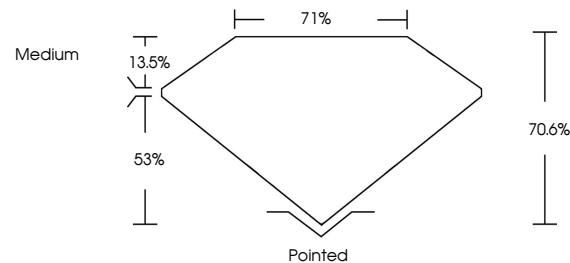
June 20, 2025	
IGI Report Number	LG717563289
Description	LABORATORY GROWN DIAMOND
Shape and Cutting Style	PRINCESS CUT
Measurements	7.46 X 7.45 X 5.26 MM
GRADING RESULTS	
Carat Weight	2.63 CARATS
Color Grade	D
Clarity Grade	VVS 2

ADDITIONAL GRADING INFORMATION

Polish	EXCELLENT
Symmetry	EXCELLENT
Fluorescence	NONE
Inscription(s)	15 LG717563289

Comments: This Laboratory Grown Diamond was created by Chemical Vapor Deposition (CVD) growth process.
Type IIa

PROPORTIONS



Sample Image Used

COLOR

D E F G H I J Faint Very Light Light

CLARITY

IF	VS ¹⁻²	VS ¹⁻²	SI ¹⁻²	I ¹⁻³
Internally Flawless	Very Very Slightly Included	Very Slightly Included	Slightly Included	Included

LABORATORY GROWN DIAMOND REPORT



June 20, 2025	
IGI Report Number	LG717563289
Description	LABORATORY GROWN DIAMOND
Shape and Cutting Style	PRINCESS CUT
Measurements	7.46 X 7.45 X 5.26 MM
GRADING RESULTS	
Carat Weight	2.63 CARATS
Color Grade	D
Clarity Grade	VVS 2

ADDITIONAL GRADING INFORMATION

Polish	EXCELLENT
Symmetry	EXCELLENT
Fluorescence	NONE
Inscription(s)	LG LG717563289
<p>Comments: This Laboratory Grown Diamond was created by Chemical Vapor Deposition (CVD) growth process.</p> <p>Type IIa</p>	



www.igi.org

© IGI 2020, International Gemological Institute

FD - 10 20



THIS DOCUMENT WAS PRODUCED WITH THE FOLLOWING SECURITY MEASURES: SPECIAL DOCUMENT PAPER, INK SCREENS, WATERMARK, BACKGROUND DESIGNS, HOLOGRAM AND OTHER SECURITY FEATURES NOT LISTED AND DO EXCEED DOCUMENT SECURITY INDUSTRY GUIDELINES

June 20, 2025
 IGI Report No LG717563289
 PRINCESS CIT

4.45 X 7.45 X 5.25 MM	Carat Weight	2.63 CARATS
	Color Grade	D
	Clarity Grade	VS 2
	Depth	70.6%
	Table	71%
	Girdle	Medium
	Polish	Polished
	Symmetry	EXCELLENT
	Fluorescence	EXCELLENT
	Inscriptions(s)	NONE
		see 1217754390

Comments:
This Laboratory Grown Diamond was
created by Chemical Vapor Deposition
(CVD) growth process.