

INTERNATIONAL
GEMOLOGICAL
INSTITUTE

ELECTRONIC COPY

LABORATORY GROWN DIAMOND REPORT

July 2, 2025

IGI Report Number

LG717561973

Description

LABORATORY GROWN DIAMOND

Shape and Cutting Style

SQUARE CUSHION MODIFIED
BRILLIANT

Measurements

9.62 X 9.40 X 6.16 MM

GRADING RESULTS

Carat Weight

4.15 CARATS

Color Grade

E

Clarity Grade

VS 1

ADDITIONAL GRADING INFORMATION

Polish

EXCELLENT


Symmetry

EXCELLENT

Fluorescence

NONE

Inscription(s)

 LG717561973

Comments: This Laboratory Grown Diamond was created by Chemical Vapor Deposition (CVD) growth process. Type IIa

LABORATORY GROWN DIAMOND REPORT

July 2, 2025

IGI Report Number

LG717561973

Description

LABORATORY GROWN DIAMOND

Shape and Cutting Style

SQUARE CUSHION MODIFIED
BRILLIANT

Measurements

9.62 X 9.40 X 6.16 MM

GRADING RESULTS

Carat Weight

4.15 CARATS

Color Grade

E

Clarity Grade

VS 1

ADDITIONAL GRADING INFORMATION

Polish

EXCELLENT

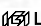
Symmetry

EXCELLENT

Fluorescence

NONE

Inscription(s)

 LG717561973

Comments: This Laboratory Grown Diamond was created by Chemical Vapor Deposition (CVD) growth process. Type IIa

LABORATORY GROWN DIAMOND REPORT

July 2, 2025

IGI Report No LG717561973

SQUARE CUSHION MODIFIED BRILLIANT

9.62 X 9.40 X 6.16 MM

Carat Weight

4.15 CARATS

Color Grade

E

Clarity Grade

VS 1

Depth

65.5%

Graile

65%

Medium to Slightly Thick (Faceted)

Culet

Pointed

Polish

EXCELLENT

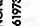
Symmetry

EXCELLENT

Fluorescence

NONE

Inscription(s)

 LG717561973

Comments: The Laboratory Grown Diamond was created by Chemical Vapor Deposition (CVD) growth process. Type IIa

LABORATORY GROWN DIAMOND REPORT

July 2, 2025

IGI Report No LG717561973

SQUARE CUSHION MODIFIED BRILLIANT

9.62 X 9.40 X 6.16 MM

Carat Weight

4.15 CARATS

Color Grade

E

Clarity Grade

VS 1

Depth

65.5%

Graile

65%

Medium to Slightly Thick (Faceted)

Culet

Pointed

Polish

EXCELLENT

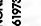
Symmetry

EXCELLENT

Fluorescence

NONE

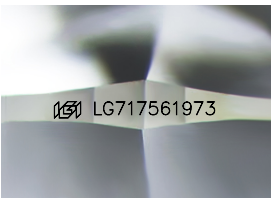
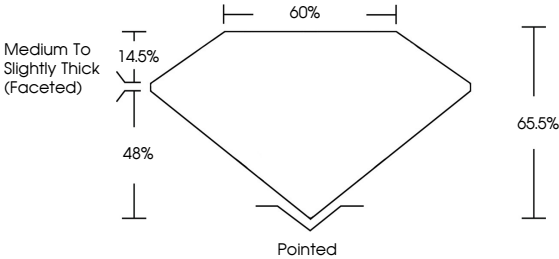
Inscription(s)

 LG717561973

Comments: The Laboratory Grown Diamond was created by Chemical Vapor Deposition (CVD) growth process. Type IIa

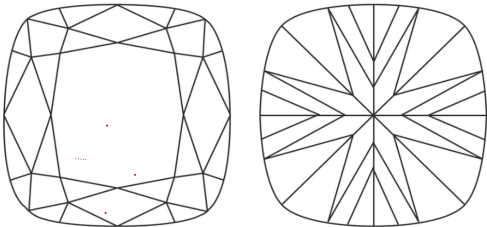
LG717561973
Report verification at igi.org

PROPORTIONS



Sample Image Used

CLARITY CHARACTERISTICS



KEY TO SYMBOLS

Red symbols indicate internal characteristics.
Green symbols indicate external characteristics.

COLOR

D E F G H I J Faint Very Light Light

CLARITY

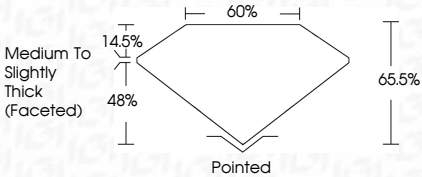
IF VS ¹⁻² VS ¹⁻² SI ¹⁻² I ¹⁻³

Internally Flawless Very Very Slightly Included Very Slightly Included Slightly Included Included

LABORATORY GROWN DIAMOND REPORT



July 2, 2025
IGI Report Number LG717561973
Description LABORATORY GROWN DIAMOND
Shape and Cutting Style SQUARE CUSHION MODIFIED BRILLIANT
Measurements 9.62 X 9.40 X 6.16 MM
GRADING RESULTS
Carat Weight 4.15 CARATS
Color Grade E
Clarity Grade VS 1



ADDITIONAL GRADING INFORMATION

Polish EXCELLENT
Symmetry EXCELLENT
Fluorescence NONE
Inscription(s)  LG717561973
Comments: This Laboratory Grown Diamond was created by Chemical Vapor Deposition (CVD) growth process. Type IIa



July 2, 2025

IGI Report No LG717561973

SQUARE CUSHION MODIFIED BRILLIANT

9.62 X 9.40 X 6.16 MM

Carat Weight

4.15 CARATS

Color Grade

E

Clarity Grade

VS 1

Depth

65.5%

Graile

65%

Medium to Slightly Thick (Faceted)

Culet

Pointed

Polish

EXCELLENT

Symmetry

EXCELLENT

Fluorescence

NONE

Inscription(s)

 LG717561973

Comments: The Laboratory Grown Diamond was created by Chemical Vapor Deposition (CVD) growth process. Type IIa