



**ELECTRONIC COPY**

## LABORATORY GROWN DIAMOND REPORT

|                         |                          |
|-------------------------|--------------------------|
| July 3, 2025            |                          |
| IGI Report Number       | LG717560296              |
| Description             | LABORATORY GROWN DIAMOND |
| Shape and Cutting Style | ROUND BRILLIANT          |
| Measurements            | 7.32 - 7.36 X 4.53 MM    |

## GRADING RESULTS

|               |                    |
|---------------|--------------------|
| Carat Weight  | 1.51 CARAT         |
| Color Grade   | FANCY INTENSE PINK |
| Clarity Grade | VVS 2              |
| Cut Grade     | IDEAL              |

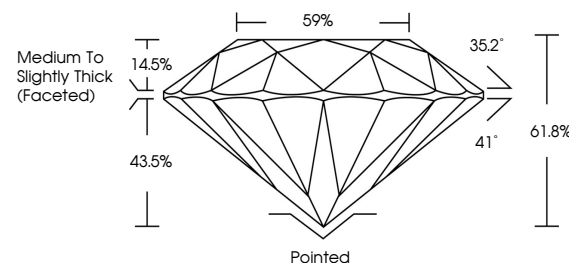
### ADDITIONAL GRADING INFORMATION

|                |                 |
|----------------|-----------------|
| Polish         | EXCELLENT       |
| Symmetry       | EXCELLENT       |
| Fluorescence   | STRONG          |
| Inscription(s) | 151 LG717560296 |

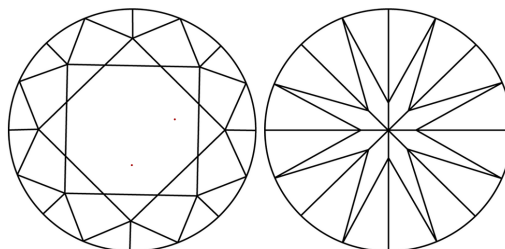
Comments: This Laboratory Grown Diamond was created by Chemical Vapor Deposition (CVD) growth process.  
Indications of post-growth treatment.

LG717560296  
Report verification at [igi.org](https://igi.org)

## PROPORTIONS

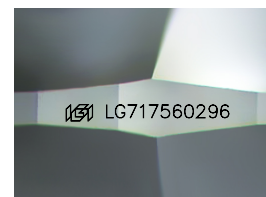


## CLARITY CHARACTERISTICS



### KEY TO SYMBOLS

Red symbols indicate internal characteristics.  
Green symbols indicate external characteristics.



Sample Image Used

COLOR

D E F G H I J Faint Very Light Light

## CLARITY

IF                      WS<sup>1-2</sup>                      VS<sup>1-2</sup>                      SI<sup>1-2</sup>                      1-3

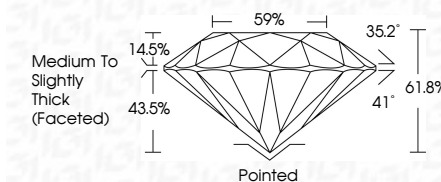
| Internally<br>Flawless | Very Very<br>Slightly Included | Very<br>Slightly Included | Slightly<br>Included | Included |
|------------------------|--------------------------------|---------------------------|----------------------|----------|
|------------------------|--------------------------------|---------------------------|----------------------|----------|



|                         |                          |
|-------------------------|--------------------------|
| July 3, 2025            |                          |
| IGI Report Number       | LG717560296              |
| Description             | LABORATORY GROWN DIAMOND |
| Shape and Cutting Style | ROUND BRILLIANT          |
| Measurements            | 7.32 - 7.36 X 4.53 MM    |

## GRADING RESULTS

|               |                    |
|---------------|--------------------|
| Carat Weight  | 1.51 CARAT         |
| Color Grade   | FANCY INTENSE PINK |
| Clarity Grade | VVS 2              |
| Cut Grade     | IDEAL              |



### ADDITIONAL GRADING INFORMATION

|  |   |
|--|---|
| Polish   | EXCELLENT   |
| Symmetry   | EXCELLENT   |
| Fluorescence   | STRONG  |
| Inscription(s)   |  LG717560296 |
| <p>Comments: This Laboratory Grown Diamond was created by Chemical Vapor Deposition (CVD) growth process.</p> <p>Indications of post-growth treatment.</p> |   |



© IGI 2020, International Gemological Institute

FD - 10 20

**www.igi.org**

THIS DOCUMENT WAS PRODUCED WITH THE FOLLOWING SECURITY MEASURES: SPECIAL DOCUMENT PAPER, INK SCREENS, WATERMARK BACKGROUND DESIGNS, HOLOGRAM AND OTHER SECURITY FEATURES NOT LISTED AND DO EXCEED DOCUMENT SECURITY INDUSTRY GUIDELINES

July 3, 2025  
GI Report No LG717560296  
ROUND BRILLIANT

|                       |               |                                    |
|-----------------------|---------------|------------------------------------|
| 2.32 - 7.36 X 4.63 MM | Carat Weight  | 1.51 CARAT                         |
|                       | Color Grade   | FANCY INTENSE PINK                 |
|                       | Clarity Grade | VVS 2                              |
|                       | Cut Grade     | IDPAL                              |
|                       | Depth         | 61.6%                              |
|                       | Table         | 59%                                |
|                       | Grade         | Medium to Slightly Thick (Faceted) |
|                       | Culet         | Pointed                            |
|                       | Polish        | EXCELLENT                          |
|                       | Symmetry      | EXCELLENT                          |
|                       | Fluorescence  | STRONG                             |
|                       | Reference(s)  | gem/12717564006                    |

**Comments:**  
This Laboratory Grown Diamond was  
created by Chemical Vapor Deposition  
(CVD) growth process.