

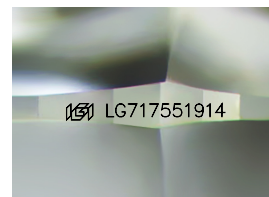
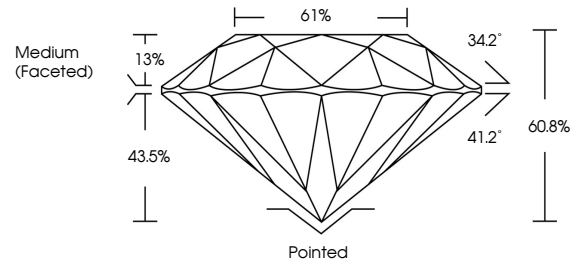


**INTERNATIONAL
GEMOLOGICAL
INSTITUTE**

ELECTRONIC COPY

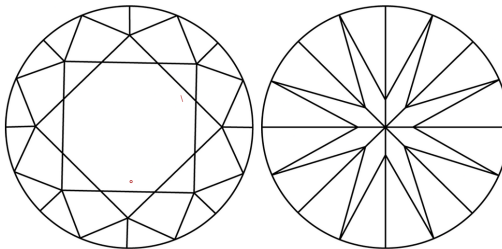
LG717551914
Report verification at igi.org

PROPORTIONS



Sample Image Used

CLARITY CHARACTERISTICS



KEY TO SYMBOLS

Red symbols indicate internal characteristics.
Green symbols indicate external characteristics.

COLOR

D E F G H I J Faint Very Light Light

CLARITY

IF WS¹⁻² VS¹⁻² SI¹⁻² I¹⁻³

Internally Flawless	Very Very Slightly Included	Very Slightly Included	Slightly Included	Included
------------------------	--------------------------------	---------------------------	----------------------	----------



© IGI 2020, International Gemological Institute

FD - 10 20



THIS DOCUMENT WAS PRODUCED WITH THE FOLLOWING SECURITY MEASURES: SPECIAL DOCUMENT PAPER, INK SCREENS, WATERMARK BACKGROUND DESIGNS, HOLOGRAM AND OTHER SECURITY FEATURES NOT LISTED AND DO EXCEED DOCUMENT SECURITY INDUSTRY GUIDELINES.

LABORATORY GROWN DIAMOND REPORT



June 30, 2025

IGI Report Number **LG717551914**

Description	LABORATORY GROWN DIAMOND
-------------	--------------------------

Shape and Cutting Style **ROUND BRILLIANT**

Measurements	8.24 - 8.26 X 5.02 MM
--------------	-----------------------

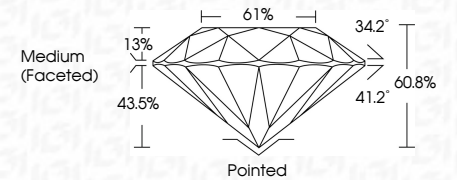
GRADING RESULTS

Carat Weight **2.12 CARATS**

Color Grade **E**

Clarity Grade VS 1

Cut Grade **EXCELLENT**



ADDITIONAL GRADING INFORMATION

Polish **EXCELLENT**Symmetry **EXCELLENT**Fluorescence **NONE**Inscription(s) **151 LG717551914**

Comments: This Laboratory Grown Diamond was created by Chemical Vapor Deposition (CVD) growth process.
Type IIa



IGI

June 30, 2025	IG Report No 1571755194		
ROUND BRILLIANT			
6.24 - 6.26 X 6.02 MM	212 CARATS		
Color Weight			
Color Grade		VS 1	
Clarity Grade		EXCELLENT	
Cut Grade		0.0%	
Depth		61%	
Table			
Girdle		Medium (Faceted)	
Culet		Pointed	
Polish		EXCELLENT	
Symmetry		EXCELLENT	
Fluorescence		NONE	
Inscriptions(s)			691677755194
Comments:			
This Laboratory Grown Diamond was created by Chemical Vapor Deposition (CVD) growth process.			
Type IId			