

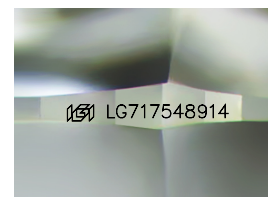
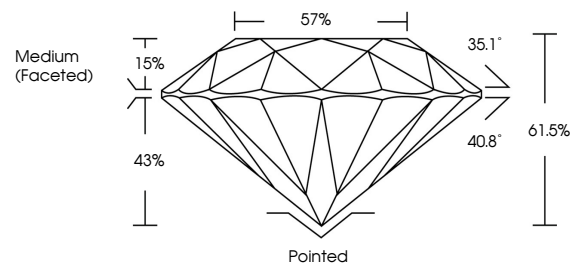


ELECTRONIC COPY

LABORATORY GROWN DIAMOND REPORT

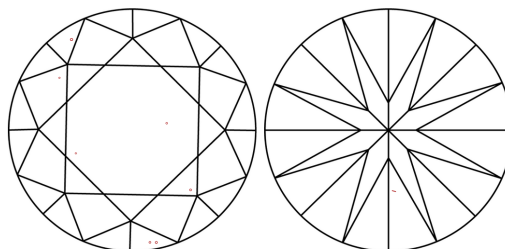
LG717548914
Report verification at igi.org

PROPORTIONS



Sample Image Used

CLARITY CHARACTERISTICS



KEY TO SYMBOLS

Red symbols indicate internal characteristics.
Green symbols indicate external characteristics.

COLOR

D E F G H I J Faint Very Light Light

CLARITY

IF WS¹⁻² VS¹⁻² SI¹⁻² |¹⁻³

Internally Flawless	Very Very Slightly Included	Very Slightly Included	Slightly Included	Included
------------------------	--------------------------------	---------------------------	----------------------	----------

LABORATORY GROWN DIAMOND REPORT



June 20, 2025

IGI Report Number **LG717548914**

Description **LABORATORY GROWN DIAMOND**Shape and Cutting Style **ROUND BRILLIANT**

Measurements 9.12 - 9.14 X 5.61 MM

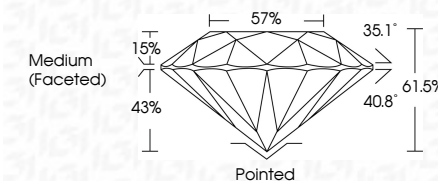
GRADING RESULTS

Carat Weight **2.85 CARATS**

Color Grade F

Clarity Grade VS 1

Cut Grade **IDEAL**



ADDITIONAL GRADING INFORMATION

Polish EXCELLENT

Symmetry **EXCELLENT**Fluorescence **NONE**Inscription(s) LG717548914

Comments: This Laboratory Grown Diamond was created by Chemical Vapor Deposition (CVD) growth process.
Type IIa



© IGI 2020, International Gemological Institute

FD - 10 20



THIS DOCUMENT WAS PRODUCED WITH THE FOLLOWING SECURITY MEASURES: SPECIAL DOCUMENT PAPER, INK SCREENS, WATERMARK, BACKGROUND DESIGNS, HOLOGRAM AND OTHER SECURITY FEATURES NOT LISTED AND DO EXCEED DOCUMENT SECURITY INDUSTRY GUIDELINES

www.igi.org

June 20, 2025	Color Weight	2.85 CARATS	F	VS 1	Polished	<p>Comments:</p> <p>This Laboratory Grown Diamond was created by Chemical Vapor Deposition (CVD) growth process.</p> <p>Type IIA</p>
GI Report No. LG71756914	Color Grade			IDEAL	EXCELLENT	
ROUND BRILLIANT	Clarity Grade			61.5%	EXCELLENT	
6.12 - 9.14 X 6.61 MM	Depth			57%	NONE	
	Table			Medium (Frosted)	lg# LG71756914	
	Girdle					
	Culet					
	Polish					
	Symmetry					
	Fluorescence					
	Inscription(s)					