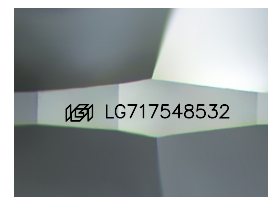
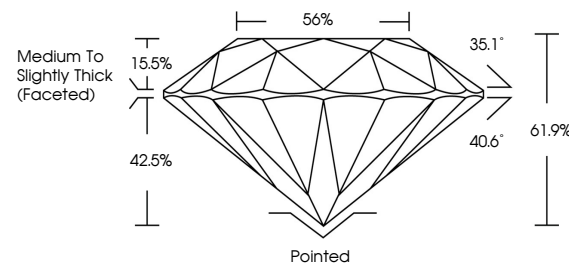


ELECTRONIC COPY

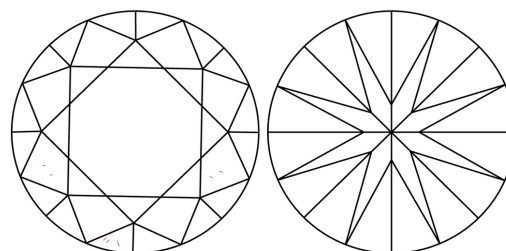
LG717548532
Report verification at igi.org

PROPORTIONS



Sample Image Used

CLARITY CHARACTERISTICS



KEY TO SYMBOLS

Red symbols indicate internal characteristics.
Green symbols indicate external characteristics.

COLOR

D E F G H I J Faint Very Light Light

CLARITY

IF	VVS ¹⁻²	VS ¹⁻²	SI ¹⁻²	I ¹⁻³
Internally Flawless	Very Very Slightly Included	Very Slightly Included	Slightly Included	Included

LABORATORY GROWN DIAMOND REPORT



June 21, 2025

IGI Report Number **LG717548532**Description **LABORATORY GROWN DIAMOND**Shape and Cutting Style **ROUND BRILLIANT**

Measurements 6.53 - 6.55 X 4.05 MM

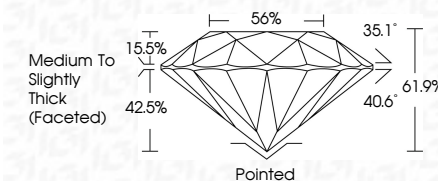
GRADING RESULTS

Carat Weight 1.07 CARAT

Color Grade E

Clarity Grade WS 2

Cut Grade **IDEAL**



ADDITIONAL GRADING INFORMATION

Polish EXCELLENT

Symmetry **EXCELLENT**Fluorescence **NONE**Inscription(s) LG717548532

Comments: As Grown - No indication of post-growth treatment.

This Laboratory Grown Diamond was created by High Pressure High Temperature (HPHT) growth process.

Type II



© IGI 2020, International Gemological Institute

FD - 10 20

www.igi.org

THIS DOCUMENT WAS PRODUCED WITH THE FOLLOWING SECURITY MEASURES: SPECIAL DOCUMENT PAPER, INK SCREENS, WATERMARK, BACKGROUND DESIGNS, HOLOGRAM AND OTHER SECURITY FEATURES NOT LISTED AND DO EXCEED DOCUMENT SECURITY INDUSTRY GUIDELINES

June 21, 2026	1.07 CARAT
GJ Report No LG77V546332	VVS 2
ROUND BRILLIANT	IDEAL
	61.7%
	56%
	Medium to Slightly Thick (Faceted)
	Pointed
	EXCELLENT
	EXCELLENT
	NONE
	69 LG77V546332
Comments:	
	No Growth - No indication of post-growth
	This Laboratory Grown Diamond was
	created by High Pressure High
	temperature (HPHT) growth process.
	Type II