



ELECTRONIC COPY

LG717548492
Report verification at igi.org



June 20, 2025
IGI Report Number LG717548492
Description LABORATORY GROWN DIAMOND
Shape and Cutting Style ROUND BRILLIANT
Measurements 6.81 - 6.87 X 4.10 MM
GRADING RESULTS
Carat Weight 1.19 CARAT
Color Grade D
Clarity Grade VVS 2
Cut Grade VERY GOOD

June 20, 2025
IGI Report Number LG717548492
Description LABORATORY GROWN DIAMOND
Shape and Cutting Style ROUND BRILLIANT
Measurements 6.81 - 6.87 X 4.10 MM

GRADING RESULTS

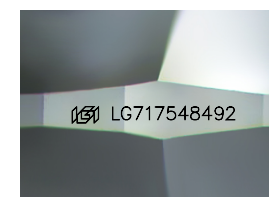
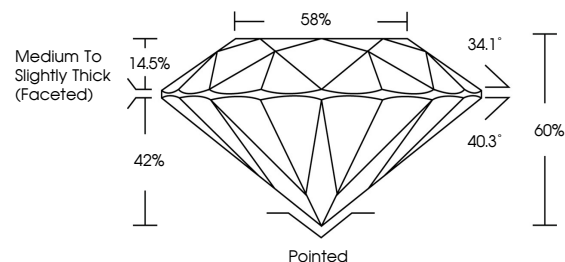
Carat Weight 1.19 CARAT
Color Grade D
Clarity Grade VVS 2
Cut Grade VERY GOOD

ADDITIONAL GRADING INFORMATION

Polish VERY GOOD
Symmetry GOOD
Fluorescence NONE
Inscription(s) IGI LG717548492

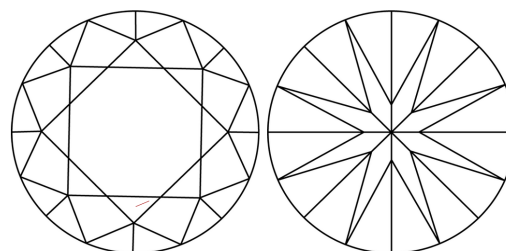
Comments: As Grown - No indication of post-growth treatment.
This Laboratory Grown Diamond was created by High Pressure High Temperature (HPHT) growth process.
Type II

PROPORTIONS



Sample Image Used

CLARITY CHARACTERISTICS



KEY TO SYMBOLS

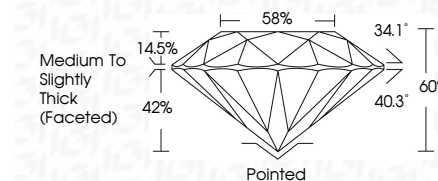
Red symbols indicate internal characteristics.
Green symbols indicate external characteristics.

COLOR

D E F G H I J Faint Very Light Light

CLARITY

IF VVS 1-2 VS 1-2 SI 1-2 I 1-3
Internally Flawless Very Very Slightly Included Very Slightly Included Slightly Included Included



ADDITIONAL GRADING INFORMATION

Polish VERY GOOD
Symmetry GOOD
Fluorescence NONE
Inscription(s) IGI LG717548492
Comments: As Grown - No indication of post-growth treatment.
This Laboratory Grown Diamond was created by High Pressure High Temperature (HPHT) growth process.
Type II



June 20, 2025
IGI Report No LG717548492
ROUND BRILLIANT
6.81 - 6.87 X 4.10 MM
1.19 CARAT
Color Grade D
Clarity Grade VVS 2
Depth 65%
Table 88%
Medium To Slightly Thick (Faceted)
Cutler Pointed
Polish VERY GOOD
Symmetry GOOD
Fluorescence NONE
Inscriptions(s) IGI LG717548492
Comments: As Grown - No indication of post-growth treatment.
This Laboratory Grown Diamond was created by High Pressure High Temperature (HPHT) growth process.
Type II