



ELECTRONIC COPY

LG717548209
Report verification at igi.org



July 1, 2025
IGI Report Number **LG717548209**
Description **LABORATORY GROWN DIAMOND**
Shape and Cutting Style **SQUARE CUSHION MODIFIED BRILLIANT**
Measurements **10.96 X 10.51 X 7.11 MM**
GRADING RESULTS
Carat Weight **7.03 CARATS**
Color Grade **FANCY YELLOW**
Clarity Grade **VS 2**

LABORATORY GROWN DIAMOND REPORT

July 1, 2025
IGI Report Number **LG717548209**
Description **LABORATORY GROWN DIAMOND**
Shape and Cutting Style **SQUARE CUSHION MODIFIED BRILLIANT**
Measurements **10.96 X 10.51 X 7.11 MM**

GRADING RESULTS

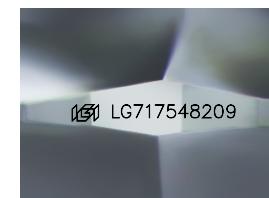
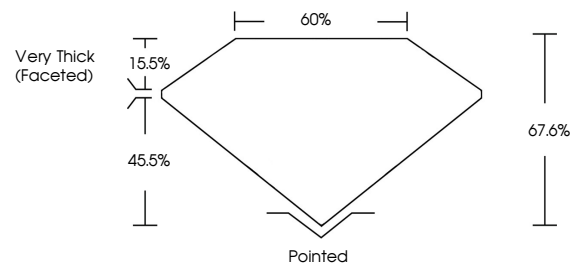
Carat Weight **7.03 CARATS**
Color Grade **FANCY YELLOW**
Clarity Grade **VS 2**

ADDITIONAL GRADING INFORMATION

Polish **EXCELLENT**
Symmetry **EXCELLENT**
Fluorescence **NONE**
Inscription(s) **IGI LG717548209**

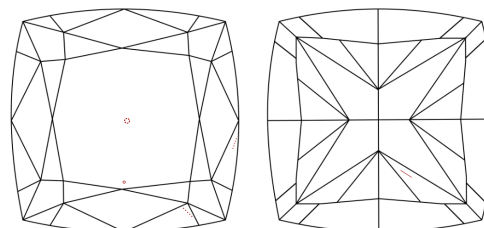
Comments: This Laboratory Grown Diamond was created by Chemical Vapor Deposition (CVD) growth process.

PROPORTIONS



Sample Image Used

CLARITY CHARACTERISTICS



KEY TO SYMBOLS

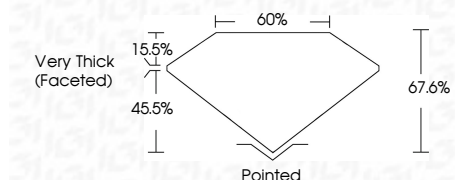
Red symbols indicate internal characteristics.
Green symbols indicate external characteristics.

COLOR

D E F G H I J Faint Very Light Light

CLARITY

IF	VS ¹⁻²	VS ¹⁻²	SI ¹⁻²	I ¹⁻³
Internally Flawless	Very Very Slightly Included	Very Slightly Included	Slightly Included	Included



ADDITIONAL GRADING INFORMATION

Polish **EXCELLENT**
Symmetry **EXCELLENT**
Fluorescence **NONE**
Inscription(s) **IGI LG717548209**
Comments: This Laboratory Grown Diamond was created by Chemical Vapor Deposition (CVD) growth process.



IGI



July 1, 2025
IGI Report No **LG717548209**
SQUARE CUSHION MODIFIED BRILLIANT
10.96 X 10.51 X 7.11 MM
Carat Weight **7.03 CARATS**
Color Grade **FANCY YELLOW**
Clarity Grade **VS 2**
Depth **67.6%**
Table **60%**
Girdle **Very Thick (Faceted)**
Culet **Pointed**
Polish **EXCELLENT**
Symmetry **EXCELLENT**
Fluorescence **NONE**
Inscription(s) **IGI LG717548209**
Comments: This Laboratory Grown Diamond was created by Chemical Vapor Deposition (CVD) growth process.