



ELECTRONIC COPY

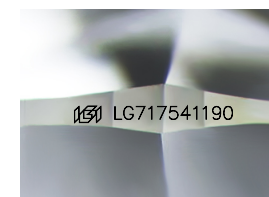
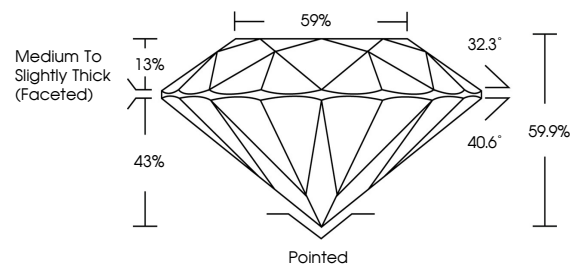
LG717541190
Report verification at igi.org



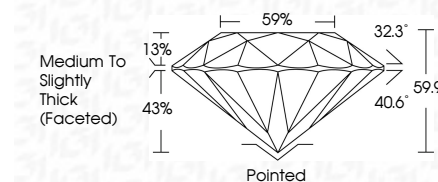
June 30, 2025
IGI Report Number **LG717541190**
Description **LABORATORY GROWN DIAMOND**
Shape and Cutting Style **ROUND BRILLIANT**
Measurements **6.66 - 6.70 X 4.00 MM**
GRADING RESULTS
Carat Weight **1.10 CARAT**
Color Grade **FANCY PINK**
Clarity Grade **VS 1**
Cut Grade **EXCELLENT**

June 30, 2025
IGI Report Number **LG717541190**
Description **LABORATORY GROWN DIAMOND**
Shape and Cutting Style **ROUND BRILLIANT**
Measurements **6.66 - 6.70 X 4.00 MM**
GRADING RESULTS
Carat Weight **1.10 CARAT**
Color Grade **FANCY PINK**
Clarity Grade **VS 1**
Cut Grade **EXCELLENT**

PROPORTIONS



Sample Image Used



ADDITIONAL GRADING INFORMATION
Polish **EXCELLENT**
Symmetry **EXCELLENT**
Fluorescence **STRONG**
Inscription(s) **IGI LG717541190**

Comments: This Laboratory Grown Diamond was created by Chemical Vapor Deposition (CVD) growth process.
Indications of post-growth treatment.

COLOR

D E F G H I J Faint Very Light Light

CLARITY

IF	VS ¹⁻²	VS ¹⁻²	SI ¹⁻²	I ¹⁻³
Internally Flawless	Very Very Slightly Included	Very Slightly Included	Slightly Included	Included

ADDITIONAL GRADING INFORMATION

Polish **EXCELLENT**
Symmetry **EXCELLENT**
Fluorescence **STRONG**
Inscription(s) **IGI LG717541190**
Comments: This Laboratory Grown Diamond was created by Chemical Vapor Deposition (CVD) growth process.
Indications of post-growth treatment.



June 30, 2025
IGI Report No LG717541190
ROUND BRILLIANT
6.66 - 6.70 X 4.00 MM
Carat Weight **1.10 CARAT**
Color Grade **FANCY PINK**
Clarity Grade **VS 1**
Depth **EXCELLENT**
Table **61%**
Girdle **EXCELLENT**
Medium To Slightly Thick (Faceted)
Culet **Pointed**
Polish **EXCELLENT**
Symmetry **EXCELLENT**
Fluorescence **STRONG**
Inscription(s) **IGI LG717541190**
Comments: This Laboratory Grown Diamond was created by Chemical Vapor Deposition (CVD) growth process.
Indications of post-growth treatment.