



ELECTRONIC COPY

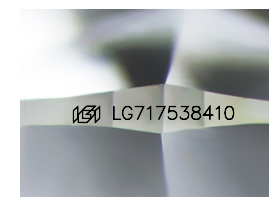
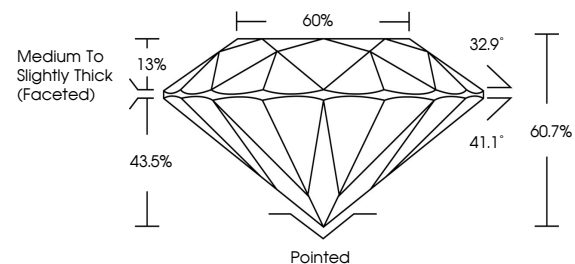
LG717538410
Report verification at igi.org



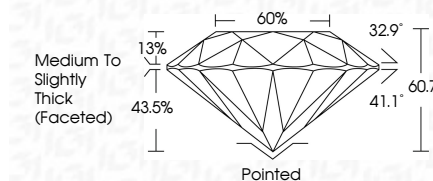
July 4, 2025
IGI Report Number **LG717538410**
Description **LABORATORY GROWN DIAMOND**
Shape and Cutting Style **ROUND BRILLIANT**
Measurements **6.41 - 6.45 X 3.90 MM**
GRADING RESULTS
Carat Weight **1.00 CARAT**
Color Grade **LIGHT BROWNISH PINK**
Clarity Grade **VVS 2**
Cut Grade **IDEAL**

July 4, 2025
IGI Report Number **LG717538410**
Description **LABORATORY GROWN DIAMOND**
Shape and Cutting Style **ROUND BRILLIANT**
Measurements **6.41 - 6.45 X 3.90 MM**
GRADING RESULTS
Carat Weight **1.00 CARAT**
Color Grade **LIGHT BROWNISH PINK**
Clarity Grade **VVS 2**
Cut Grade **IDEAL**

PROPORTIONS



Sample Image Used



ADDITIONAL GRADING INFORMATION

Polish **EXCELLENT**
Symmetry **EXCELLENT**
Fluorescence **SLIGHT**
Inscription(s) **IGI LG717538410**

Comments: This Laboratory Grown Diamond was created by Chemical Vapor Deposition (CVD) growth process.
Indications of post-growth treatment.

ADDITIONAL GRADING INFORMATION

Polish **EXCELLENT**
Symmetry **EXCELLENT**
Fluorescence **SLIGHT**
Inscription(s) **IGI LG717538410**
Comments: This Laboratory Grown Diamond was created by Chemical Vapor Deposition (CVD) growth process.
Indications of post-growth treatment.

COLOR

D E F G H I J Faint Very Light Light

CLARITY

IF	VS ¹⁻²	VS ¹⁻²	SI ¹⁻²	I ¹⁻³
Internally Flawless	Very Very Slightly Included	Very Slightly Included	Slightly Included	Included



IGI

July 4, 2025
IGI Report No **LG717538410**
ROUND BRILLIANT
6.41 - 6.45 X 3.90 MM
1.00 CARAT
LIGHT BROWNISH PINK
Color Grade
VVS 2
Clarity Grade
IDEAL
Depth
60.7%
Table
60%
Girdle
Medium To Slightly Thick (Faceted)
Culet
Pointed
Polish
EXCELLENT
Symmetry
EXCELLENT
Fluorescence
SLIGHT
Inscriptions(s)
IGI LG717538410
Comments: This Laboratory Grown Diamond was created by Chemical Vapor Deposition (CVD) growth process.
Indications of post-growth treatment.