



ELECTRONIC COPY

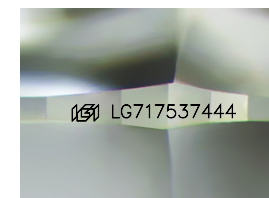
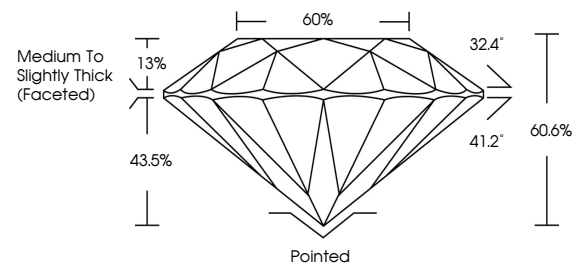
LG717537444
Report verification at igi.org



July 1, 2025
IGI Report Number **LG717537444**
Description **LABORATORY GROWN DIAMOND**
Shape and Cutting Style **ROUND BRILLIANT**
Measurements **9.28 - 9.35 X 5.64 MM**
GRADING RESULTS
Carat Weight **3.01 CARATS**
Color Grade **F**
Clarity Grade **SI 1**
Cut Grade **EXCELLENT**

July 1, 2025
IGI Report Number **LG717537444**
Description **LABORATORY GROWN DIAMOND**
Shape and Cutting Style **ROUND BRILLIANT**
Measurements **9.28 - 9.35 X 5.64 MM**

PROPORTIONS

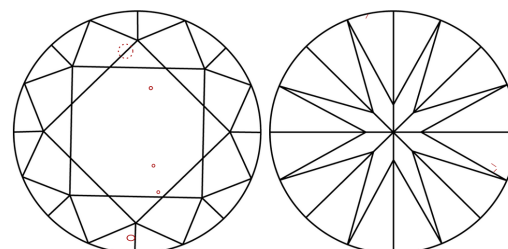


Sample Image Used

GRADING RESULTS

Carat Weight **3.01 CARATS**
Color Grade **F**
Clarity Grade **SI 1**
Cut Grade **EXCELLENT**

CLARITY CHARACTERISTICS



KEY TO SYMBOLS

Red symbols indicate internal characteristics.
Green symbols indicate external characteristics.

ADDITIONAL GRADING INFORMATION

Polish **EXCELLENT**
Symmetry **EXCELLENT**
Fluorescence **NONE**
Inscription(s) **IGI LG717537444**

Comments: This Laboratory Grown Diamond was created by Chemical Vapor Deposition (CVD) growth process.
Type IIa

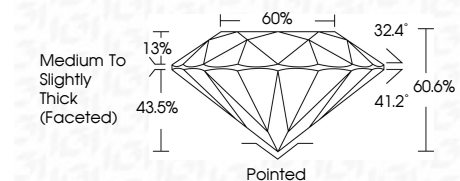
COLOR

D E F G H I J Faint Very Light Light

CLARITY

IF VS¹⁻² VS¹⁻² SI¹⁻² I¹⁻³

Internally Flawless Very Very Slightly Included Very Slightly Included Slightly Included Included



ADDITIONAL GRADING INFORMATION

Polish **EXCELLENT**
Symmetry **EXCELLENT**
Fluorescence **NONE**
Inscription(s) **IGI LG717537444**
Comments: This Laboratory Grown Diamond was created by Chemical Vapor Deposition (CVD) growth process.
Type IIa



July 1, 2025
IGI Report No LG717537444
ROUND BRILLIANT
9.28 - 9.35 X 5.64 MM
3.01 CARATS
F
SI 1
EXCELLENT
60.6%
60%
Medium To Slightly Thick (Faceted)
Pointed
EXCELLENT
EXCELLENT
NONE
IGI LG717537444
Comments: This Laboratory Grown Diamond was created by Chemical Vapor Deposition (CVD) growth process.
Type IIa