

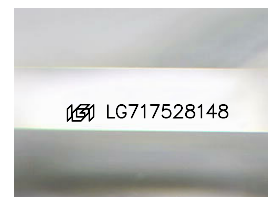
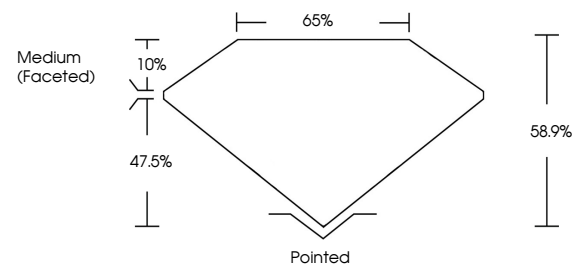


**ELECTRONIC COPY**

## LABORATORY GROWN DIAMOND REPORT

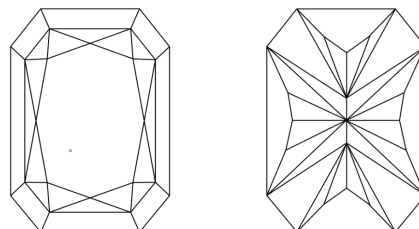
LG717528148  
Report verification at [igi.org](https://igi.org)

## PROPORTIONS



Sample Image Used

## CLARITY CHARACTERISTICS



## KEY TO SYMBOLS

Red symbols indicate internal characteristics.  
Green symbols indicate external characteristics.

## COLOR

D E F G H I J Faint Very Light Light

## CLARITY

IF	VS <sup>1-2</sup>	VS <sup>1-2</sup>	SI <sup>1-2</sup>	I <sup>1-3</sup>
Internally Flawless	Very Very Slightly Included	Very Slightly Included	Slightly Included	Included

## LABORATORY GROWN DIAMOND REPORT



June 21, 2025

IGI Report Number LG717528148

Description **LABORATORY GROWN DIAMOND**

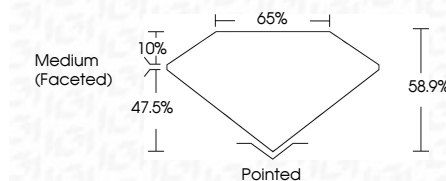
Shape and Cutting Style

Measurements **9.04 X 6.30 X 3.71 MM**

## GRADING RESULTS

Carat Weight 1.82 CARAT

Color Grade

Clarity Grade WS 2

### ADDITIONAL GRADING INFORMATION

Polish EXCELLENT

Symmetry **EXCELLENT**Fluorescence **NONE**Inscription(s)  LG717528148

Comments: This Laboratory Grown Diamond was created by Chemical Vapor Deposition (CVD) growth process.  
Type IIa



© IGI 2020, International Gemological Institute

FD - 10 20

**www.igi.org**

THIS DOCUMENT WAS PRODUCED WITH THE FOLLOWING SECURITY MEASURES: SPECIAL DOCUMENT PAPER, INK SCREENS, WATERMARK, BACKGROUND DESIGNS, HOLOGRAM AND OTHER SECURITY FEATURES NOT LISTED AND DO EXCEED DOCUMENT SECURITY INDUSTRY GUIDELINE

June 21, 2025	1.62 CARAT	Pointed	Comments: The Laboratory Grown Diamond was found to be chemically Vapor Deposition (CVD) with no growth pattern. Type IIa
IG Report No. LG7775291.48	D	VVS 2	
CU CONFINED RECT. MODIFIED BRILLIANT	Color Grade	58.9%	
0.04 X 0.30 X 3.71 MM	Clarity Grade	65%	
	Depth	Medium (Faceted)	
	Table		
	Girdle		
	Culet		
	Polish	Excellent	
	Symmetry	Excellent	
	Fluorescence	NONE	
	Inscriptions(s)	689 LG7775291.48	