



**ELECTRONIC COPY**

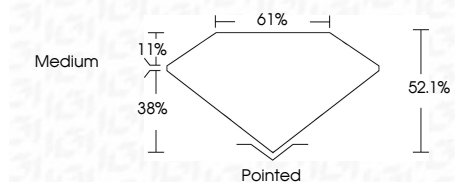
LG717527408  
Report verification at igi.org



June 19, 2025  
IGI Report Number **LG717527408**  
Description **LABORATORY GROWN DIAMOND**  
Shape and Cutting Style **TRIANGULAR BRILLIANT**  
Measurements **7.37 X 7.22 X 3.76 MM**

**GRADING RESULTS**

Carat Weight **1.00 CARAT**  
Color Grade **D**  
Clarity Grade **VS 2**



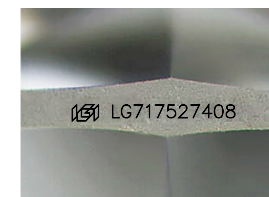
**ADDITIONAL GRADING INFORMATION**

Polish **EXCELLENT**  
Symmetry **EXCELLENT**  
Fluorescence **NONE**  
Inscription(s) **(IGI) LG717527408**  
Comments: This Laboratory Grown Diamond was created by Chemical Vapor Deposition (CVD) growth process. Type IIa



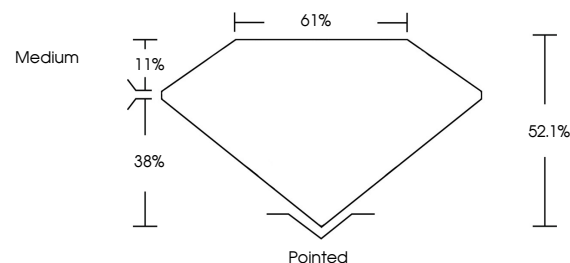
**IGI**

June 19, 2025  
IGI Report No LG717527408  
**TRIANGULAR BRILLIANT**  
7.37 X 7.22 X 3.76 MM  
1.00 CARAT  
Color Grade **D**  
Clarity Grade **VS 2**  
Depth **62.1%**  
Table **61%**  
Girdle **Medium**  
Culet **Pointed**  
Polish **EXCELLENT**  
Symmetry **EXCELLENT**  
Fluorescence **NONE**  
Inscription(s) **(IGI) LG717527408**  
Comments: This Laboratory Grown Diamond was created by Chemical Vapor Deposition (CVD) growth process. Type IIa

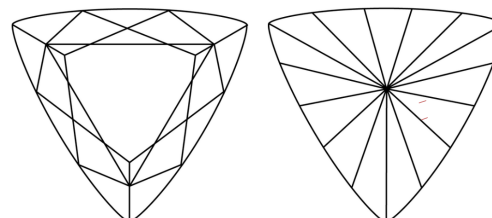


Sample Image Used

**PROPORTIONS**



**CLARITY CHARACTERISTICS**



**KEY TO SYMBOLS**

Red symbols indicate internal characteristics.  
Green symbols indicate external characteristics.

**COLOR**

D E F G H I J Faint Very Light Light

**CLARITY**

IF	WS <sup>1-2</sup>	VS <sup>1-2</sup>	SI <sup>1-2</sup>	I <sup>1-3</sup>
Internally Flawless	Very Very Slightly Included	Very Slightly Included	Slightly Included	Included

