



ELECTRONIC COPY

LG717520104
Report verification at igi.org



July 1, 2025
IGI Report Number **LG717520104**
Description **LABORATORY GROWN DIAMOND**
Shape and Cutting Style **CUSHION MODIFIED BRILLIANT**
Measurements **11.02 X 9.36 X 6.33 MM**
GRADING RESULTS
Carat Weight **5.02 CARATS**
Color Grade **F**
Clarity Grade **VVS 1**

July 1, 2025
IGI Report Number **LG717520104**
Description **LABORATORY GROWN DIAMOND**
Shape and Cutting Style **CUSHION MODIFIED BRILLIANT**
Measurements **11.02 X 9.36 X 6.33 MM**

GRADING RESULTS

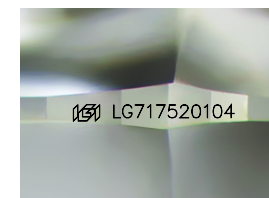
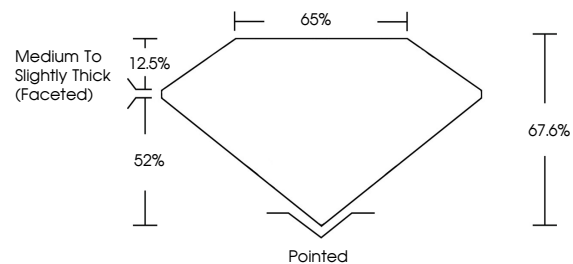
Carat Weight **5.02 CARATS**
Color Grade **F**
Clarity Grade **VVS 1**

ADDITIONAL GRADING INFORMATION

Polish **EXCELLENT**
Symmetry **EXCELLENT**
Fluorescence **NONE**
Inscription(s) **IGI LG717520104**

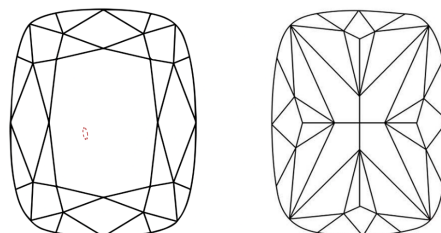
Comments: This Laboratory Grown Diamond was created by Chemical Vapor Deposition (CVD) growth process. Type IIa

PROPORTIONS



Sample Image Used

CLARITY CHARACTERISTICS



KEY TO SYMBOLS

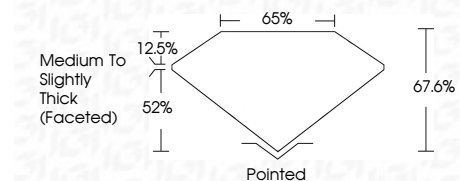
Red symbols indicate internal characteristics.
Green symbols indicate external characteristics.

COLOR

D E F G H I J Faint Very Light Light

CLARITY

IF	VS ¹⁻²	VS ¹⁻²	SI ¹⁻²	I ¹⁻³
Internally Flawless	Very Very Slightly Included	Very Slightly Included	Slightly Included	Included



ADDITIONAL GRADING INFORMATION

Polish **EXCELLENT**
Symmetry **EXCELLENT**
Fluorescence **NONE**
Inscription(s) **IGI LG717520104**
Comments: This Laboratory Grown Diamond was created by Chemical Vapor Deposition (CVD) growth process. Type IIa



IGI



July 1, 2025
IGI Report No LG717520104
CUSHION MODIFIED BRILLIANT
11.02 X 9.36 X 6.33 MM
5.02 CARATS
F
VVS 1
67.6%
65%
Medium to Slightly Thick (Faceted)
Pointed
EXCELLENT
EXCELLENT
NONE
IGI LG717520104

Comments: This Laboratory Grown Diamond was created by Chemical Vapor Deposition (CVD) growth process. Type IIa