

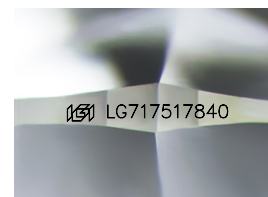
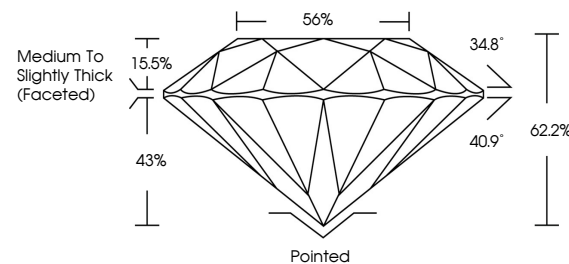


ELECTRONIC COPY

LABORATORY GROWN DIAMOND REPORT

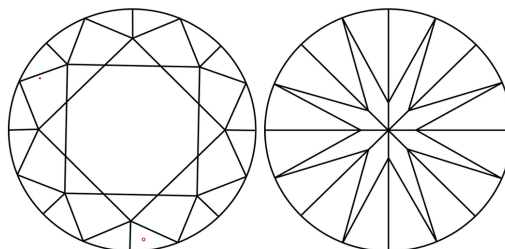
LG717517840
Report verification at igi.org

PROPORTIONS



Sample Image Used

CLARITY CHARACTERISTICS



KEY TO SYMBOLS

Red symbols indicate internal characteristics.
Green symbols indicate external characteristics.

COLOR

D E F G H I J Faint Very Light Light

CLARITY

IF WS¹⁻² VS¹⁻² SI¹⁻² |¹⁻³

Internally Flawless	Very Very Slightly Included	Very Slightly Included	Slightly Included	Included
------------------------	--------------------------------	---------------------------	----------------------	----------

LABORATORY GROWN DIAMOND REPORT



June 19, 2025

IGI Report Number **LG717517840**

Description **LABORATORY GROWN DIAMOND**Shape and Cutting Style **ROUND BRILLIANT**

Measurements 8.16 - 8.20 X 5.08 MM

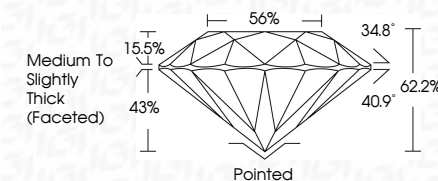
GRADING RESULTS

Carat Weight **2.08 CARATS**

Color Grade E

Clarity Grade VS 1

Cut Grade **IDEAL**



ADDITIONAL GRADING INFORMATION

Polish **EXCELLENT**Symmetry **EXCELLENT**Fluorescence **NONE**Inscription(s) LG717517840

Comments: This Laboratory Grown Diamond was created by Chemical Vapor Deposition (CVD) growth process.
Type IIa



© IGI 2020, International Gemological Institute

FD - 10 20



THIS DOCUMENT WAS PRODUCED WITH THE FOLLOWING SECURITY MEASURES: SPECIAL DOCUMENT PAPER, INK SCREENS, WATERMARK, BACKGROUND DESIGNS, HOLOGRAM AND OTHER SECURITY FEATURES NOT LISTED AND DO EXCEED DOCUMENT SECURITY INDUSTRY GUIDELINES

www.igi.org

June 19, 2025	2.08 CARATS
GI Report No. G177517940	VSI
ROUND BRILLIANT	IDEAL
	62.2%
	56%
	Medium to Slightly Thick (scored)
	Pointed
	EXCELLENT
	EXCELLENT
	NONE
	IGI LG77517940
Comment: This Laboratory Grown Diamond was created by Chemical Vapor Deposition (CVD) growth process. Type IIA	