



ELECTRONIC COPY

LG717513905 Report verification at igi.org



June 26, 2025

IGI Report Number LG717513905

Description LABORATORY GROWN DIAMOND

Shape and Cutting Style CUT CORNERED RECTANGULAR MODIFIED BRILLIANT

Measurements 13.67 X 9.05 X 5.92 MM

GRADING RESULTS

Carat Weight 6.74 CARATS

Color Grade F

Clarity Grade VS 1

June 26, 2025 IGI Report Number LG717513905 Description LABORATORY GROWN DIAMOND Shape and Cutting Style CUT CORNERED RECTANGULAR MODIFIED BRILLIANT Measurements 13.67 X 9.05 X 5.92 MM

GRADING RESULTS

Carat Weight 6.74 CARATS

Color Grade F

Clarity Grade VS 1

ADDITIONAL GRADING INFORMATION

Polish EXCELLENT

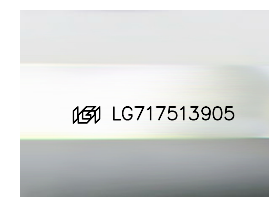
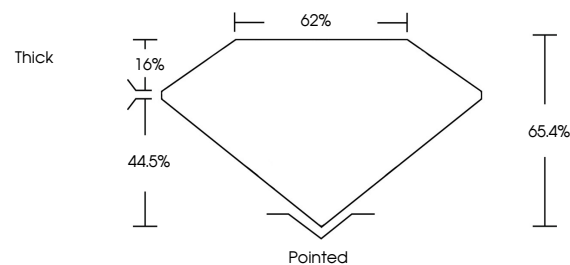
Symmetry EXCELLENT

Fluorescence NONE

Inscription(s) LG717513905

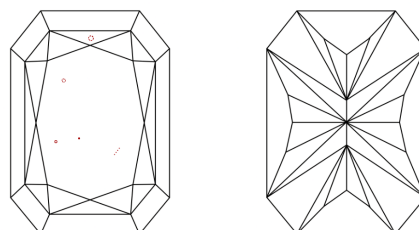
Comments: This Laboratory Grown Diamond was created by Chemical Vapor Deposition (CVD) growth process. Type IIa

PROPORTIONS



Sample Image Used

CLARITY CHARACTERISTICS



KEY TO SYMBOLS

Red symbols indicate internal characteristics. Green symbols indicate external characteristics.

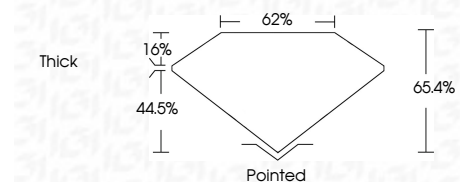
COLOR

D E F G H I J Faint Very Light Light

CLARITY

IF WS 1-2 VS 1-2 SI 1-2 I 1-3

Internally Flawless Very Very Slightly Included Very Slightly Included Slightly Included Included



ADDITIONAL GRADING INFORMATION

Polish EXCELLENT

Symmetry EXCELLENT

Fluorescence NONE

Inscription(s) LG717513905

Comments: This Laboratory Grown Diamond was created by Chemical Vapor Deposition (CVD) growth process. Type IIa



IGI



June 26, 2025 IGI Report No LG717513905 CUT CORNERED RECT. MODIFIED BRILLIANT 13.67 X 9.05 X 5.92 MM 6.74 CARATS F VS 1 65.4% 62% Thick Pointed EXCELLENT EXCELLENT NONE LG717513905 Comments: This Laboratory Grown Diamond was created by Chemical Vapor Deposition (CVD) growth process. Type IIa