



**ELECTRONIC COPY**

LG715599234  
Report verification at igi.org



June 18, 2025  
IGI Report Number **LG715599234**  
Description **LABORATORY GROWN DIAMOND**  
Shape and Cutting Style **MODIFIED NONAGON STEP CUT**  
Measurements **9.76 X 6.30 X 3.56 MM**  
**GRADING RESULTS**  
Carat Weight **1.53 CARAT**  
Color Grade **G**  
Clarity Grade **VVS 2**

**LABORATORY GROWN DIAMOND REPORT**

June 18, 2025  
IGI Report Number **LG715599234**  
Description **LABORATORY GROWN DIAMOND**  
Shape and Cutting Style **MODIFIED NONAGON STEP CUT**  
Measurements **9.76 X 6.30 X 3.56 MM**

**GRADING RESULTS**

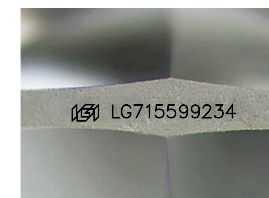
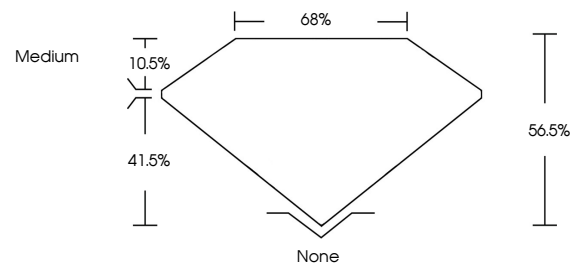
Carat Weight **1.53 CARAT**  
Color Grade **G**  
Clarity Grade **VVS 2**

**ADDITIONAL GRADING INFORMATION**

Polish **EXCELLENT**  
Symmetry **EXCELLENT**  
Fluorescence **NONE**  
Inscription(s) **IGI LG715599234**

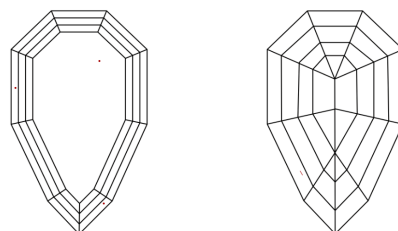
Comments: This Laboratory Grown Diamond was created by Chemical Vapor Deposition (CVD) growth process.  
Type IIa

**PROPORTIONS**



Sample Image Used

**CLARITY CHARACTERISTICS**



**KEY TO SYMBOLS**

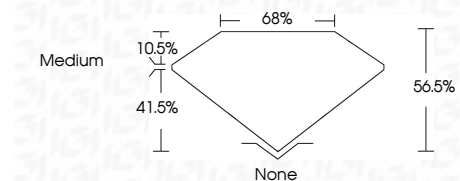
Red symbols indicate internal characteristics.  
Green symbols indicate external characteristics.

**COLOR**

D E F G H I J Faint Very Light Light

**CLARITY**

IF	WS <sup>1-2</sup>	VS <sup>1-2</sup>	SI <sup>1-2</sup>	I <sup>1-3</sup>
Internally Flawless	Very Very Slightly Included	Very Slightly Included	Slightly Included	Included



**ADDITIONAL GRADING INFORMATION**

Polish **EXCELLENT**  
Symmetry **EXCELLENT**  
Fluorescence **NONE**  
Inscription(s) **IGI LG715599234**  
Comments: This Laboratory Grown Diamond was created by Chemical Vapor Deposition (CVD) growth process.  
Type IIa



June 18, 2025  
IGI Report No LG715599234  
**MODIFIED NONAGON STEP CUT**  
9.76 X 6.30 X 3.56 MM  
1.53 CARAT  
Color Grade **G**  
Clarity Grade **VVS 2**  
Depth **56.5%**  
Table **10.5%**  
Girdle **Medium**  
Culet **None**  
Polish **EXCELLENT**  
Symmetry **EXCELLENT**  
Fluorescence **NONE**  
Inscription(s) **IGI LG715599234**  
Comments: This Laboratory Grown Diamond was created by Chemical Vapor Deposition (CVD) growth process.  
Type IIa